

Anti-Phospho-p38 (Thr180) Rabbit antibody



Catalog Number: 166732

Product name

Anti-Phospho-p38 (Thr180) Rabbit antibody

Ig Type

Rabbit IgG

Specificity

Human

Applications

WB, FC

Antibody description

Phospho-p38 (Thr180) Rabbit polyclonal antibody

Dilutions

WB: 1/1000

Preparation

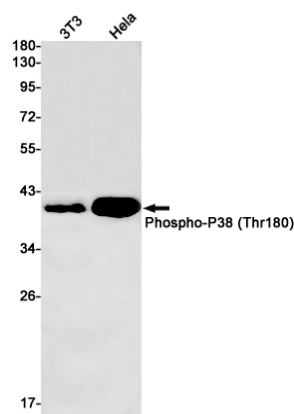
Antigen: A synthetic phosphopeptide corresponding to residues surrounding Thr180 of human p38

FC: 1/50

Validations

Formulation

Supplied in 50nM Tris-Glycine(pH 7.4), 0.15M NaCl, 40%Glycerol, 0.01% sodium azide and 0.05% BSA.



Storage

Store at -20°C. Stable for 12 months from date of receipt.

Western blot detection of Phospho-P38 (Thr180) in 3T3,HeLa cell lysates using Phospho-P38 (Thr180) Rabbit pAb(1:1000 diluted).Predicted band size:41kDa.Observed band size:41kDa.

Clonality

Polyclonal