

Anti-MCSF Receptor Rabbit antibody



Catalog Number: 166728

Product name

Anti-MCSF Receptor Rabbit antibody

Ig Type

Rabbit IgG

Specificity

Mouse, Rat

Applications

WB

Antibody description

MCSF Receptor Rabbit polyclonal antibody

Dilutions

WB: 1/1000

Preparation

Antigen: Recombinant protein of mouse MCSF Receptor

Formulation

Supplied in 50nM Tris-Glycine(pH 7.4), 0.15M NaCl, 40%Glycerol, 0.01% sodium azide and 0.05% BSA.

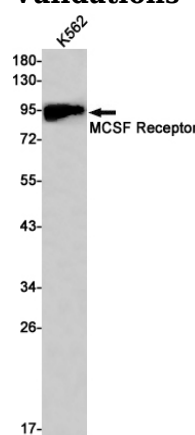
Storage

Store at -20°C. Stable for 12 months from date of receipt.

Clonality

Polyclonal

Validations



Western blot detection of MCSF Receptor in K562 cell lysates using MCSF Receptor Rabbit pAb(1:1000 diluted). Predicted band size: 109kDa. Observed band size: 109kDa.