

Anti-Phospho-p38 (Thr180/Tyr182) Rabbit antibody



Catalog Number: 166717

Product name

WB

Anti-Phospho-p38 (Thr180/Tyr182) Rabbit antibody

Dilutions

WB:1/500-1/1000

Specificity

Human, Mouse, Rat

Antibody description

Phospho-p38 (Thr180/Tyr182) Rabbit polyclonal antibody

Preparation

Antigen: Peptide sequence around phosphorylation site of threonine 180 or tyrosine 182 (E-M-T(p)-G-Y(p)-V-A) derived from Human P38 MAPK.

Formulation

Supplied at 1.0mg/mL in phosphate buffered saline (without Mg²⁺ and Ca²⁺), pH 7.4, 150mM NaCl, 0.02% sodium azide and 50% glycerol.

Storage

Store at 4°C short term. Store at -20°C long term. Avoid freeze / thaw cycle.

Clonality

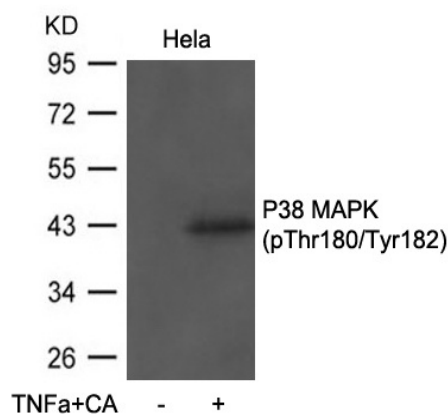
Polyclonal

Ig Type

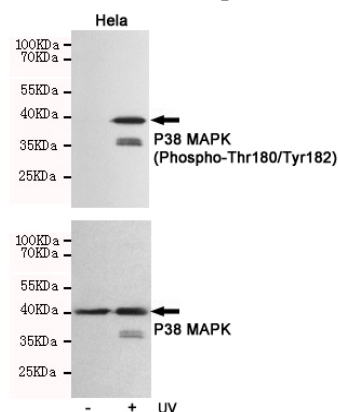
IgG

Applications

Validations



Western blot analysis of extracts from HeLa cells untreated or treated with TNF α 03b1+CA using P38 MAPK(Phospho-Thr180/Tyr182) Antibody .



Western blot analysis of extracts from HeLa cells, untreated or treated with UV, using P38 MAPK(Phospho-Thr180/Tyr182) Rabbit pAb (166717,1:500 diluted,upper) or p38 MAPK Rabbit pAb (310008,1:500 diluted,lower).