

# Anti-Phospho-p53 (Ser37) Rabbit antibody



Catalog Number: 166715

## Product name

Anti-Phospho-p53 (Ser37) Rabbit antibody

## Specificity

Human, Mouse, Rat

## Antibody description

Phospho-p53 (Ser37) Rabbit polyclonal antibody

## Preparation

Antigen: Peptide sequence around phosphorylation site of serine 37 (L-P-(p)S-Q-A) derived from Human p53.

## Formulation

Supplied at 1.0mg/mL in phosphate buffered saline (without Mg<sup>2+</sup> and Ca<sup>2+</sup>), pH 7.4, 150mM NaCl, 0.02% sodium azide and 50% glycerol.

## Storage

Store at 4°C short term. Store at -20°C long term. Avoid freeze / thaw cycle.

## Clonality

Polyclonal

## Ig Type

Rabbit IgG

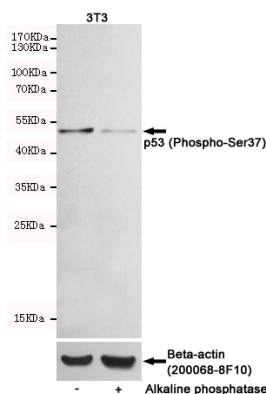
## Applications

WB, ICC/IF

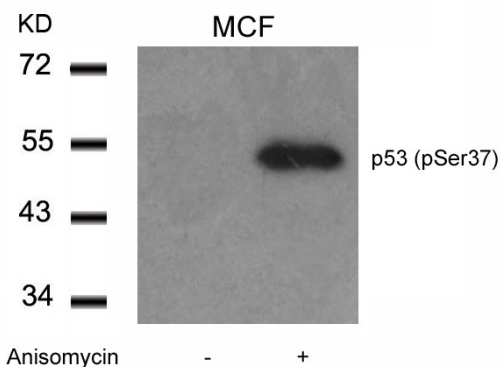
## Dilutions

WB:1/500-1/1000 ICC:1/100-1/200

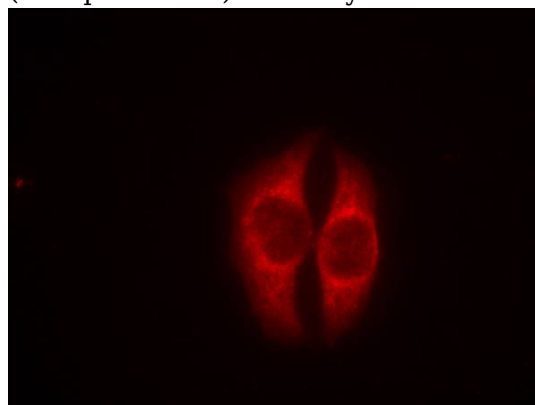
## Validations



Western blot detection of p53 (Phospho-Ser37) in 3T3 cells untreated or treated with Alkaline phosphatase using p53 (Phospho-Ser37) Rabbit pAb (dilution 1:1000, upper) or u03b2-Actin Mouse mAb (200068-8F10, lower). Predicted band size: 53kDa. Observed band size: 53kDa.



Western blot analysis of extracts from MCF cells untreated or treated with Anisomycin using p53 (Phospho-Ser37) Antibody .



Immunofluorescence staining of methanol-fixed HeLa cells using p53 (Phospho-Ser37) Antibody .