

# Anti-GTPase HRAS Rabbit antibody



Catalog Number: 166700

## Product name

Anti-GTPase HRAS Rabbit antibody

## Specificity

Human, Mouse, Rat

## Antibody description

GTPase HRAS Rabbit polyclonal antibody

## Preparation

Antigen: A synthesized peptide derived from human Ras

## Formulation

Rabbit IgG in phosphate buffered saline , pH 7.4, 150mM NaCl, 0.02% sodium azide and 50% glycerol.

## Storage

Store at 4°C short term. Store at -20°C long term. Avoid freeze / thaw cycle.

## Clonality

Polyclonal

## Ig Type

Rabbit IgG

## Applications

WB, IP, FC

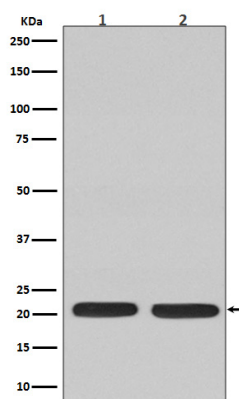
## Dilutions

WB: 1/10000-1/20000

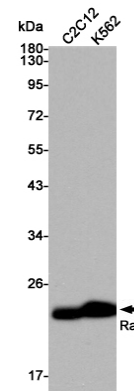
IP: 1/20

FC: 1/50

## Validations



Western blot analysis of Ras expression in (1) C6



cell lysate; (2) Jurkat cell lysate.

Western blot analysis of Ras expression in C2C12 and K562 cell lysates using Ras antibody at 1/3000 dilution. Predicted band size: 21 kDa. Observed band size: 21 kDa.