

# Anti-Phospho-p38 (Thr180) Rabbit antibody



Catalog Number: 166691

## Product name

Anti-Phospho-p38 (Thr180) Rabbit antibody

## Specificity

Human, Mouse, Rat

## Antibody description

Phospho-p38 (Thr180) Rabbit polyclonal antibody

## Preparation

Antigen: Peptide sequence around phosphorylation site of threonine 180 (E-M-T(p)-G-Y ) derived from Human P38MAPK.

## Formulation

Supplied at 1.0mg/mL in phosphate buffered saline (without Mg<sup>2+</sup> and Ca<sup>2+</sup>), pH 7.4, 150mM NaCl, 0.02% sodium azide and 50% glycerol.

## Storage

Store at 4°C short term. Store at -20°C long term. Avoid freeze / thaw cycle.

## Clonality

Polyclonal

## Ig Type

IgG

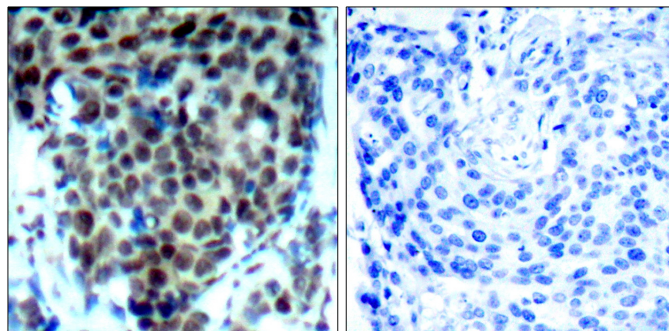
## Applications

WB, IHC-P

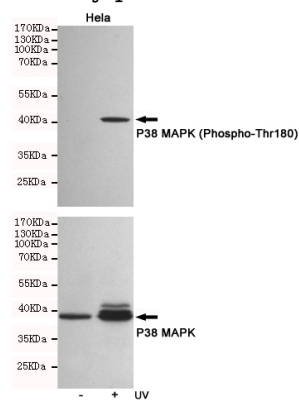
## Dilutions

WB:1/500-1/1000IHC:1/50-1/100

## Validations

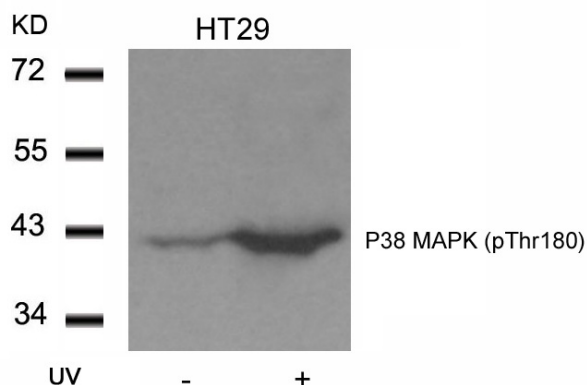


Immunohistochemical analysis of paraffin-embedded human breast carcinoma tissue using P38 MAPK (Phospho-Thr180) Antibody (left) or the same antibody preincubated with blocking peptide



(right).

Western blot analysis of extracts from HeLa cells, untreated or treated with UV, using P38 MAPK (Phospho-Thr180) Rabbit pAb (166691,1:500 diluted,upper) or p38 MAPK Rabbit pAb (310008,1:500 diluted,lower).



Western blot analysis of extracts from HT29 cells untreated or treated with UV using P38 MAPK (Phospho-Thr180) Antibody .