

Anti-Phospho-eIF2A (Ser51) Rabbit antibody



Catalog Number: 166690

Product name

Anti-Phospho-eIF2A (Ser51) Rabbit antibody

Specificity

Human, Mouse, Rat

Antibody description

Phospho-eIF2A (Ser51) Rabbit polyclonal antibody

Preparation

Antigen: Peptide sequence around phosphorylation site of serine 51 (E-L-S(p)-R-R) derived from Human eIF2 α .

Formulation

Supplied at 1.0mg/mL in phosphate buffered saline (without Mg²⁺ and Ca²⁺), pH 7.4, 150mM NaCl, 0.02% sodium azide and 50% glycerol.

Storage

Store at 4°C short term. Store at -20°C long term. Avoid freeze / thaw cycle.

Clonality

Polyclonal

Ig Type

Rabbit IgG

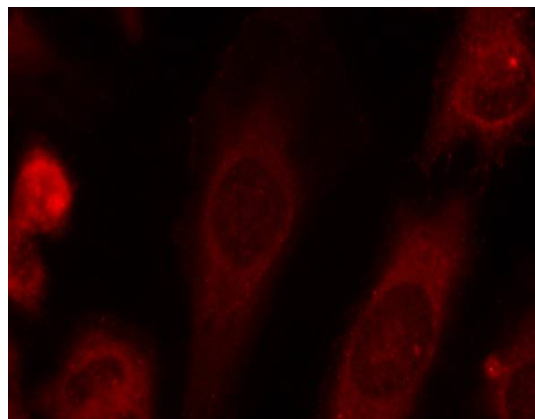
Applications

WB, IHC-P, ICC/IF

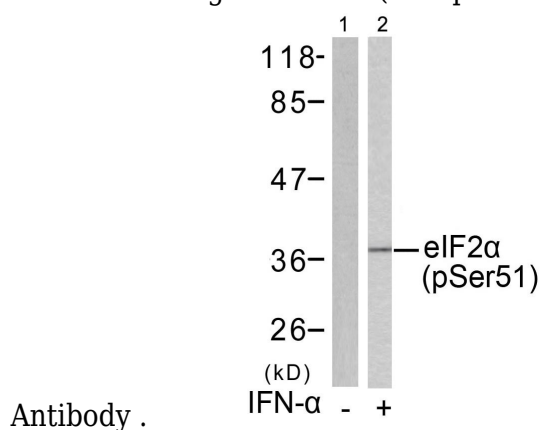
Dilutions

WB:1/500-1/1000 ICC:1/100-1/200 IHC:1/50-1/100

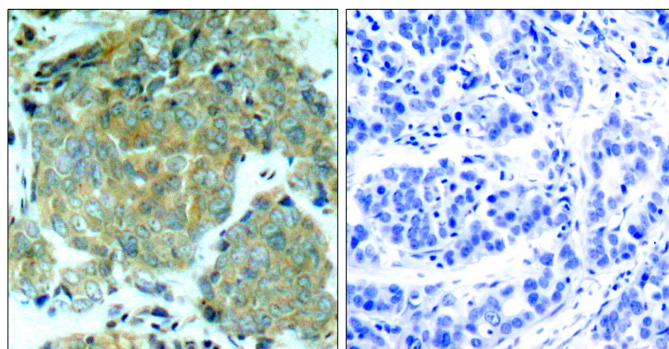
Validations



Immunofluorescence staining of methanol-fixed Hela cells using eIF2u03b1(Phospho-Ser51)



Western blot analysis of extracts from Jurkat cells untreated or treated with H₂O₂ using eIF2u03b1 (Phospho-Ser51) Antibody .

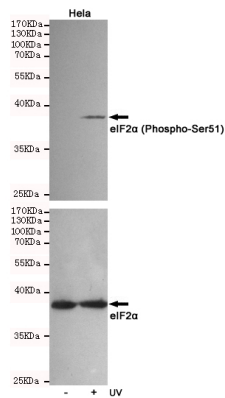


Immunohistochemical analysis of paraffin-embedded human breast carcinoma tissue using eIF2u03b1 (Phospho-Ser51) Antibody (left) or the same antibody preincubated with blocking peptide

Anti-Phospho-eIF2A (Ser51) Rabbit antibody



Catalog Number: 166690



Western blot analysis of extracts from HeLa cells, untreated or treated with UV, using eIF2u03b1 (Phospho-Ser51) Rabbit pAb (166690,1:500 diluted,upper) or eIF2u03b1 Mouse mAb (201137,lower).

#51279 (right).