

# Anti-Phospho-Hsp27 (Ser82) Rabbit antibody



Catalog Number: 166689

## Product name

Anti-Phospho-Hsp27 (Ser82) Rabbit antibody

## Specificity

Human

## Antibody description

Phospho-Hsp27 (Ser82) Rabbit polyclonal antibody

## Preparation

Antigen: Peptide sequence around phosphorylation site of serine 82 (Q-L-S(p)-S-G) derived from Human HSP27.

## Formulation

Supplied at 1.0mg/mL in phosphate buffered saline (without Mg<sup>2+</sup> and Ca<sup>2+</sup>), pH 7.4, 150mM NaCl, 0.02% sodium azide and 50% glycerol.

## Storage

Store at 4°C short term. Store at -20°C long term. Avoid freeze / thaw cycle.

## Clonality

Polyclonal

## Ig Type

IgG

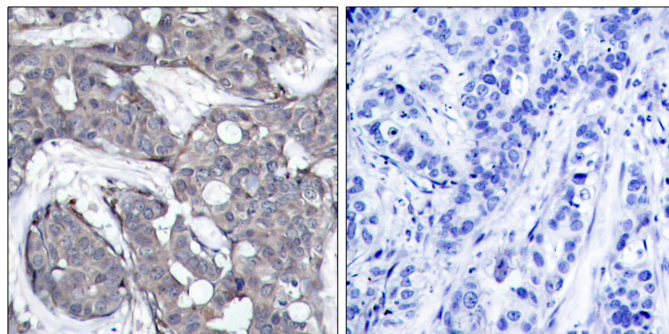
## Applications

WB, IHC-P

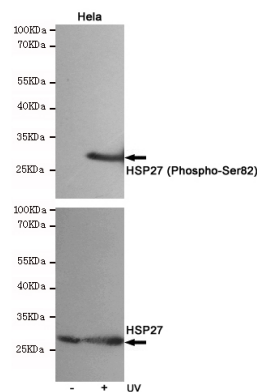
## Dilutions

WB:1/500-1/1000 IHC:1/50-1/100

## Validations

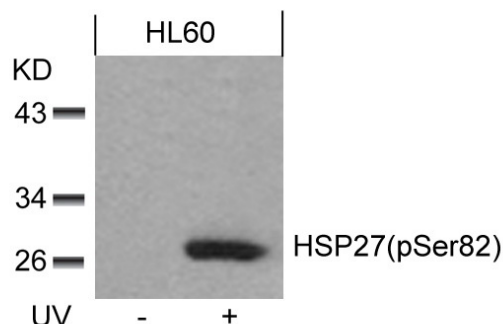


Immunohistochemical analysis of paraffin-embedded human breast carcinoma tissue using HSP27 (Phospho-Ser82) Antibody (left) or the same antibody preincubated with blocking peptide



(right).

Western blot analysis of extracts from HeLa cells, untreated or treated with UV, using HSP27 (Phospho-Ser82) Rabbit pAb (166689,1:500 diluted, upper) or Hsp27 Mouse mAb (200778, lower).



Western blot analysis of extracts from HL60 cells untreated or treated with UV using HSP27 (Phospho-Ser82) Antibody .