

Anti-ENO1 Rabbit antibody



Catalog Number: 166668

Product name

Anti-ENO1 Rabbit antibody

Specificity

Human, Mouse, Rat

Antibody description

ENO1 Rabbit polyclonal antibody

Preparation

Antigen: A synthesized peptide derived from human ENO1

Formulation

Rabbit IgG in phosphate buffered saline , pH 7.4, 150mM NaCl, 0.02% sodium azide and 50% glycerol.

Storage

Store at 4°C short term. Store at -20°C long term. Avoid freeze / thaw cycle.

Clonality

Polyclonal

Ig Type

Rabbit IgG

Applications

WB, ICC/IF, IP

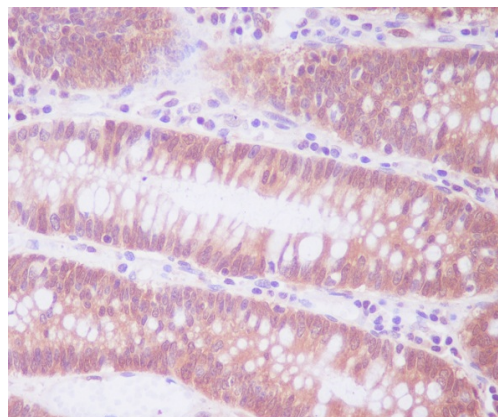
Dilutions

WB: 1/500-1/2000

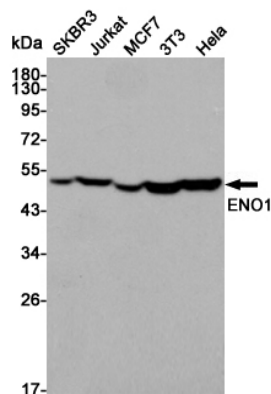
ICC/IF: 1/50-1/200

IP: 1/50

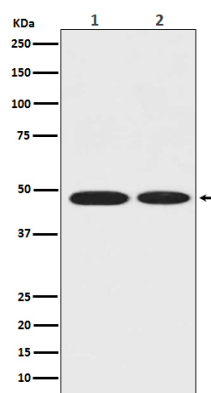
Validations



Immunohistochemical analysis of paraffin-embedded human colon, using ENO1 Antibody.



Western blot analysis of ENO1 expression in SKBR3, Jurkat, MCF7, 3T3 and Hela cell lysates using ENO1 antibody at 1/3000 dilution. Predicted band size: 47 kDa. Observed band size: 47 kDa.



Western blot analysis of ENO1 in (1) MCF-7 whole cell lysate; (2) Rat brain tissue lysate.