

# Pan Phospho-Ser/Thr pAb



Catalog Number: 166550

## Product name

Pan Phospho-Ser/Thr pAb

## Specificity

ALL

## Antibody description

Polyclonal antibody to Pan Phospho-Ser/Thr

## Preparation

Antigen: A synthetic peptide corresponding to a sequence containing phosphorylated S & T.

## Formulation

PBS with 0.02% sodium azide, 50% glycerol, pH7.3.

## Storage

Store at -20°C. Avoid freeze / thaw cycles.

## Clonality

Polyclonal

## Ig Type

Rabbit IgG

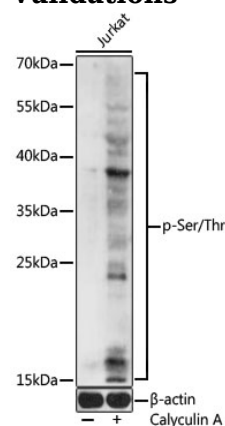
## Applications

WB

## Dilutions

WB 1:500 - 1:2000

## Validations



## Western blot - Pan Phospho-Ser/Thr pAb

Western blot analysis of extracts of Jurkat cells, using Phospho-Ser/Thr pAb at 1:1000 dilution. Jurkat cells were treated by Calyculin A (100 nM) at 37°C for 30 minutes. Secondary antibody: HRP Goat Anti-Rabbit IgG (H+L) at 1:10000 dilution. Lysates/proteins: 25 µg per lane. Blocking buffer: 3% BSA. Detection: ECL Basic Kit. Exposure time: 90s.