

# Phospho-PEA15-S104 pAb



Catalog Number: 166518

## Product name

Phospho-PEA15-S104 pAb

## Specificity

Human, Mouse, Rat

## Antibody description

Polyclonal antibody to Phospho-PEA15-S104

## Preparation

Antigen: A synthetic phosphorylated peptide around S104 of human PEA15 (NP\_003759.1).

## Formulation

PBS with 0.02% sodium azide, 50% glycerol, pH7.3.

## Storage

Store at -20°C. Avoid freeze / thaw cycles.

## Clonality

Polyclonal

## Ig Type

Rabbit IgG

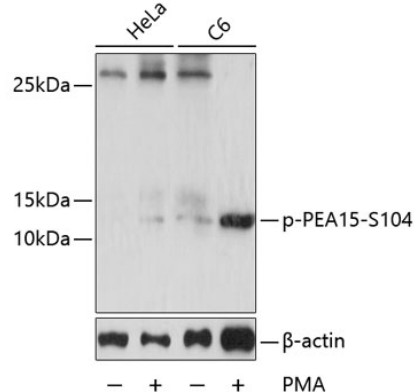
## Applications

WB

## Dilutions

WB 1:500 - 1:2000

## Validations



Western blot - Phospho-PEA15-S104 pAb

Western blot analysis of extracts of HeLa and C6 cells, using Phospho-PEA15-S104 antibody at 1:2000 dilution. HeLa cells were treated by PMA/TPA (200nM) for 15 minutes after serum-starvation overnight. C6 cells were treated by PMA/TPA (200nM) for 30 minutes after serum-starvation overnight. Secondary antibody: HRP Goat Anti-Rabbit IgG (H+L) at 1:10000 dilution. Lysates/proteins: 25ug per lane. Blocking buffer: 3% BSA. Detection: ECL Basic Kit. Exposure time: 10s.