

# Phospho-ITGB3-Y773 pAb



Catalog Number: 166415

## Product name

Phospho-ITGB3-Y773 pAb

## Specificity

Human, Mouse

## Antibody description

Polyclonal antibody to Phospho-ITGB3-Y773

## Preparation

Antigen: A phospho specific peptide corresponding to residues surrounding Y773 of human ITGB3

## Formulation

PBS with 0.02% sodium azide, 50% glycerol, pH7.3.

## Storage

Store at -20°C. Avoid freeze / thaw cycles.

## Clonality

Polyclonal

## Ig Type

Rabbit IgG

## Applications

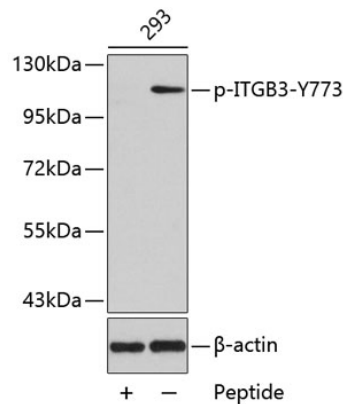
WB, IHC

## Dilutions

WB 1:500 - 1:1000

IHC 1:50 - 1:100

## Validations



Western blot - Phospho-ITGB3-Y773 pAb

Western blot analysis of extracts from 293 cells using phospho-ITGB3-Y773 antibody and the same antibody preincubated with blocking peptide. Secondary antibody: HRP Goat Anti-Rabbit IgG (H+L) at 1:10000 dilution. Lysates/proteins: 25ug per lane. Blocking buffer: 3% BSA.