

Phospho-GRIA2-S880 pAb



Catalog Number: 166374

Product name

Phospho-GRIA2-S880 pAb

Specificity

Human, Mouse, Rat

Antibody description

Polyclonal antibody to Phospho-GRIA2-S880

Preparation

Antigen: A phospho specific peptide corresponding to residues surrounding S880 of human GRIA2

Formulation

PBS with 0.02% sodium azide, 50% glycerol, pH7.3.

Storage

Store at -20°C. Avoid freeze / thaw cycles.

Clonality

Polyclonal

Ig Type

Rabbit IgG

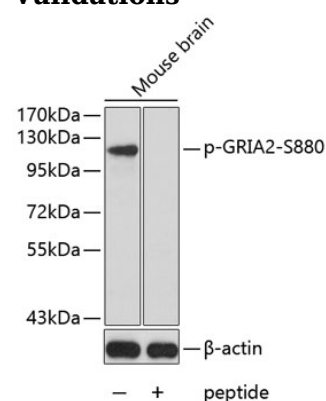
Applications

WB

Dilutions

WB 1:500 - 1:2000

Validations



Western blot - Phospho-GRIA2-S880 pAb

Western blot analysis of extracts from mouse brain tissue using Phospho-GRIA2-S880 antibody and the same antibody preincubated with blocking peptide. Secondary antibody: HRP Goat Anti-Rabbit IgG (H+L) at 1:10000 dilution. Lysates/proteins: 25ug per lane. Blocking buffer: 3% BSA.