

# CORO1A Polyclonal Antibody



Catalog Number: 166082

## Product name

CORO1A Polyclonal Antibody

## Specificity

Human, Mouse, Rat

## Antibody description

Polyclonal antibody to CORO1A

## Preparation

Antigen: Recombinant fusion protein containing a sequence corresponding to amino acids 362-461 of human CORO1A (NP\_001180262.1).

## Formulation

PBS with 0.02% sodium azide, 50% glycerol, pH7.3.

## Storage

Store at -20°C. Avoid freeze / thaw cycles.

## Clonality

Polyclonal

## Ig Type

Rabbit IgG

## Applications

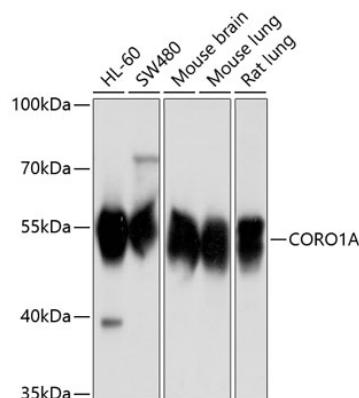
WB, IF

## Dilutions

WB 1:500 - 1:2000

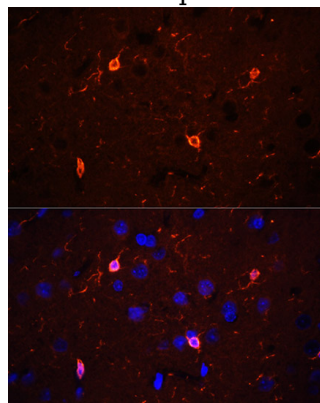
IF 1:50 - 1:200

## Validations



Western blot - CORO1A Polyclonal Antibody

Western blot analysis of extracts of various cell lines, using CORO1A antibody at 1:1000 dilution. Secondary antibody: HRP Goat Anti-Rabbit IgG (H+L) at 1:10000 dilution. Lysates/proteins: 25ug per lane. Blocking buffer: 3% nonfat dry milk in TBST. Detection: ECL Basic Kit. Exposure time: 1s.



Immunofluorescence - CORO1A Polyclonal Antibody

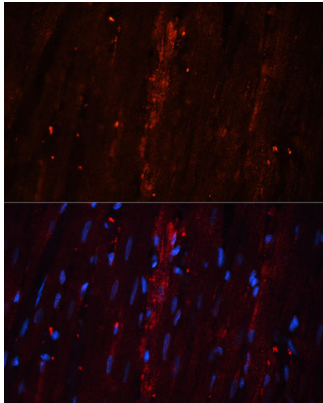
Immunofluorescence analysis of rat brain using CORO1A antibody at dilution of 1:100 (40x lens). Blue: DAPI for nuclear staining.

# CORO1A Polyclonal Antibody



Catalog Number: 166082

---



Immunofluorescence - CORO1A Polyclonal Antibody

Immunofluorescence analysis of rat heart using CORO1A antibody at dilution of 1:100 (40x lens). Blue: DAPI for nuclear staining.