

BMP5 Polyclonal Antibody



Catalog Number: 165846

Product name

BMP5 Polyclonal Antibody

Specificity

Human, Mouse, Rat

Antibody description

Polyclonal antibody to BMP5

Preparation

Antigen: Recombinant fusion protein containing a sequence corresponding to amino acids 317-454 of human BMP5 (NP_066551.1).

Formulation

PBS with 0.02% sodium azide, 50% glycerol, pH7.3.

Storage

Store at -20°C. Avoid freeze / thaw cycles.

Clonality

Polyclonal

Ig Type

Rabbit IgG

Applications

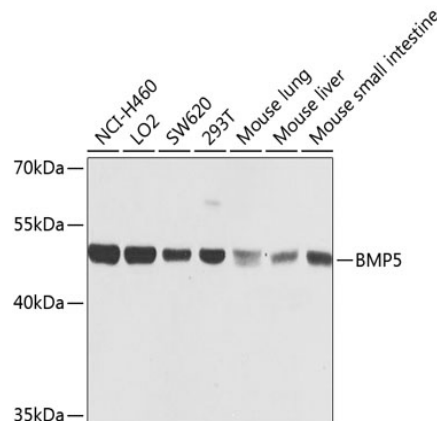
WB, IHC

Dilutions

WB 1:500 - 1:2000

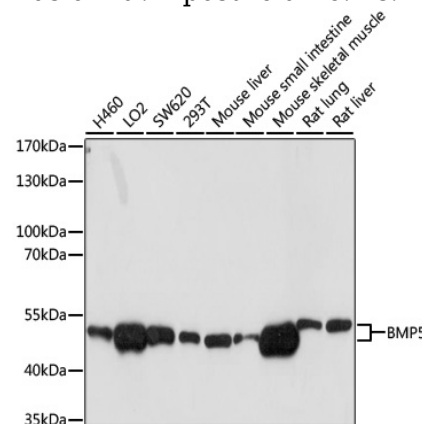
IHC 1:50 - 1:100

Validations



Western blot - BMP5 Polyclonal Antibody

Western blot analysis of extracts of various cell lines, using BMP5 antibody at 1:1000 dilution. Secondary antibody: HRP Goat Anti-Rabbit IgG (H+L) at 1:10000 dilution. Lysates/proteins: 25ug per lane. Blocking buffer: 3% nonfat dry milk in TBST. Detection: ECL Basic Kit. Exposure time: 1s.



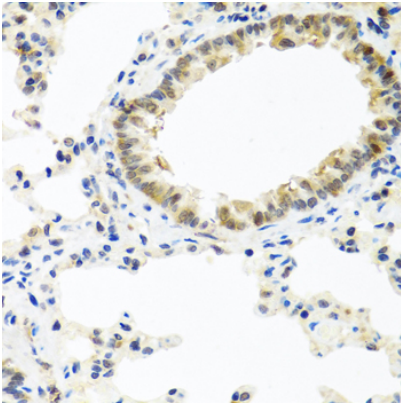
Western blot - BMP5 Polyclonal Antibody

Western blot analysis of extracts of various cells, using BMP5 antibody at 1:1000 dilution ratio through one-step method. Secondary antibody: HRP Goat Anti-Rabbit IgG (H+L) at 1:10000 dilution. Lysates/proteins: 25ug per lane. Blocking buffer: 3% nonfat dry milk in TBST. Detection: ECL Basic Kit. Exposure time: 10s.

BMP5 Polyclonal Antibody

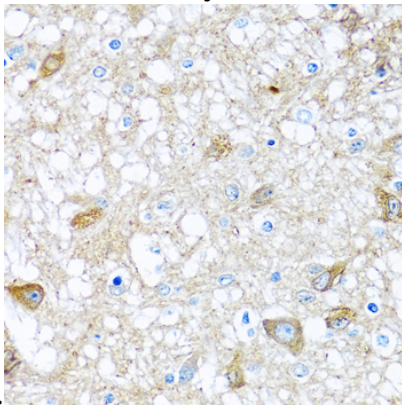


Catalog Number: 165846



Immunohistochemistry - BMP5 Polyclonal Antibody

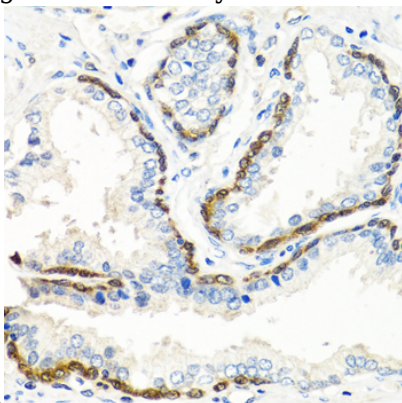
Immunohistochemistry of paraffin-embedded rat lung using BMP5 antibody at dilution of 1:100



(40x lens).

Immunohistochemistry - BMP5 Polyclonal Antibody

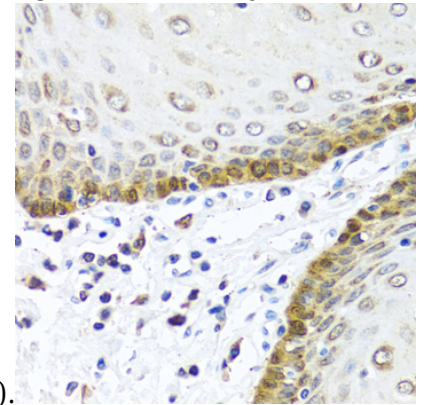
Immunohistochemistry of paraffin-embedded rat brain using BMP5 antibody at dilution of 1:100



(40x lens).

Immunohistochemistry - BMP5 Polyclonal Antibody

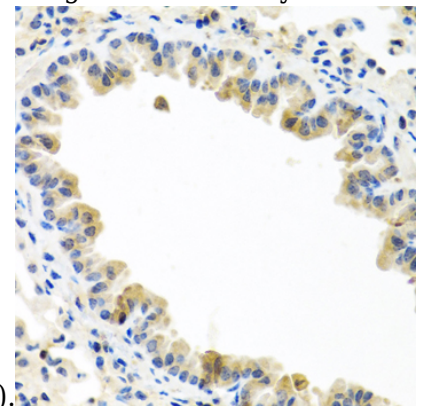
Immunohistochemistry of paraffin-embedded human prostate using BMP5 antibody at dilution



of 1:100 (40x lens).

Immunohistochemistry - BMP5 Polyclonal Antibody

Immunohistochemistry of paraffin-embedded human esophagus using BMP5 antibody at dilution



of 1:100 (40x lens).

Immunohistochemistry - BMP5 Polyclonal Antibody

Immunohistochemistry of paraffin-embedded mouse lung using BMP5 antibody at dilution of 1:100 (40x lens).