

# PRKCG Polyclonal Antibody



Catalog Number: 165613

## Product name

PRKCG Polyclonal Antibody

## Specificity

Human, Mouse, Rat

## Antibody description

Polyclonal antibody to PRKCG

## Preparation

Antigen: A synthetic peptide of human PRKCG

## Formulation

PBS with 0.02% sodium azide, 50% glycerol, pH7.3.

## Storage

Store at -20°C. Avoid freeze / thaw cycles.

## Clonality

Polyclonal

## Ig Type

Rabbit IgG

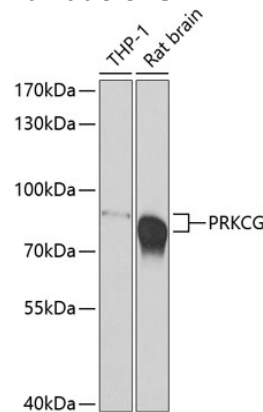
## Applications

WB, IF

## Dilutions

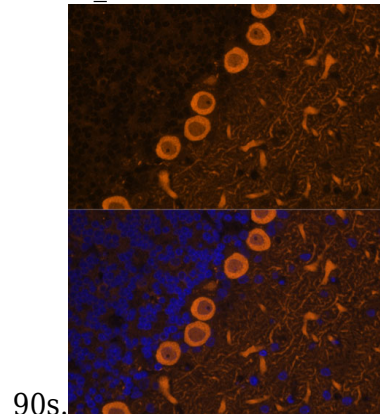
WB 1:500 - 1:2000  
IF 1:50 - 1:200

## Validations



### Western blot - PRKCG Polyclonal Antibody

Western blot analysis of extracts of various cell lines, using PRKCG antibody at 1:500 dilution. Secondary antibody: HRP Goat Anti-Rabbit IgG (H+L) at 1:10000 dilution. Lysates/proteins: 25ug per lane. Blocking buffer: 3% nonfat dry milk in TBST. Detection: ECL Basic Kit. Exposure time:



### Immunofluorescence - PRKCG Polyclonal Antibody

Immunofluorescence analysis of rat brain cells using PRKCG antibody at dilution of 1:100. Blue: DAPI for nuclear staining.