

# RARRES2 Polyclonal Antibody



Catalog Number: 165114

## Product name

RARRES2 Polyclonal Antibody

## Specificity

Human, Mouse, Rat

## Antibody description

Polyclonal antibody to RARRES2

## Preparation

Antigen: Recombinant fusion protein containing a sequence corresponding to amino acids 17-163 of human RARRES2 (NP\_002880.1).

## Formulation

PBS with 0.02% sodium azide, 50% glycerol, pH7.3.

## Storage

Store at -20°C. Avoid freeze / thaw cycles.

## Clonality

Polyclonal

## Ig Type

Rabbit IgG

## Applications

WB, IHC, IF

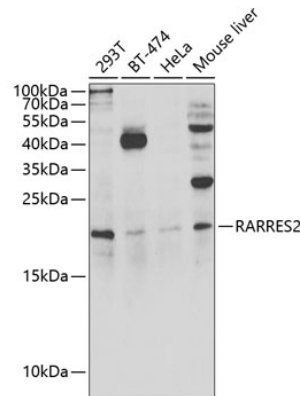
## Dilutions

WB 1:500 - 1:2000

IHC 1:50 - 1:200

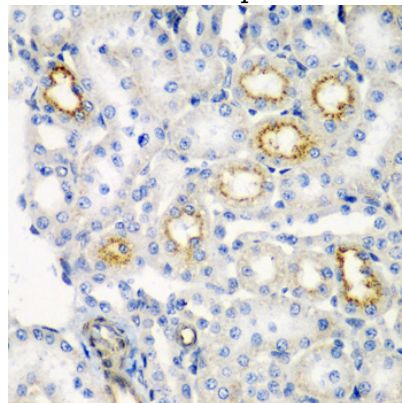
IF 1:50 - 1:100

## Validations



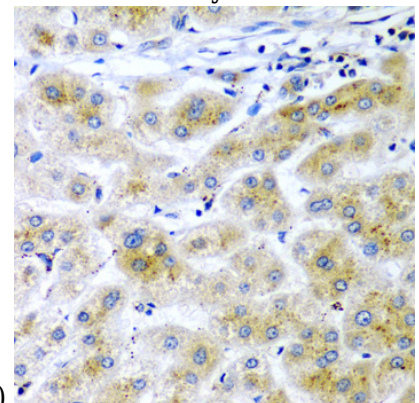
Western blot - RARRES2 Polyclonal Antibody

Western blot analysis of extracts of various cell lines, using RARRES2 antibody at 1:1000 dilution. Secondary antibody: HRP Goat Anti-Rabbit IgG (H+L) at 1:10000 dilution. Lysates/proteins: 25ug per lane. Blocking buffer: 3% nonfat dry milk in TBST. Detection: ECL Enhanced Kit. Exposure time: 15min.



Immunohistochemistry - RARRES2 Polyclonal Antibody

Immunohistochemistry of paraffin-embedded rat kidney using RARRES2 antibody at dilution of



1:200 (40x lens).

# RARRES2 Polyclonal Antibody

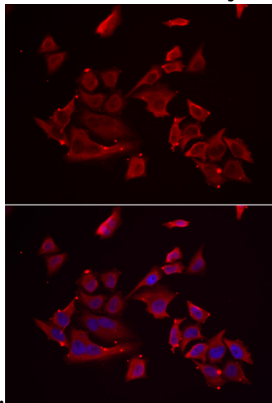


Catalog Number: 165114

---

## Immunohistochemistry - RARRES2 Polyclonal Antibody

Immunohistochemistry of paraffin-embedded human liver cancer using RARRES2 antibody at



dilution of 1:200 (40x lens).

## Immunofluorescence - RARRES2 Polyclonal Antibody

Immunofluorescence analysis of MCF-7 cells using RARRES2 antibody . Blue: DAPI for nuclear staining.