

RPL13 Polyclonal Antibody



Catalog Number: 165001

Product name

RPL13 Polyclonal Antibody

Specificity

Human, Mouse, Rat

Antibody description

Polyclonal antibody to RPL13

Preparation

Antigen: Recombinant fusion protein containing a sequence corresponding to amino acids 1-211 of human RPL13 (NP_150254.1).

Formulation

PBS with 0.02% sodium azide, 50% glycerol, pH7.3.

Storage

Store at -20°C. Avoid freeze / thaw cycles.

Clonality

Polyclonal

Ig Type

Rabbit IgG

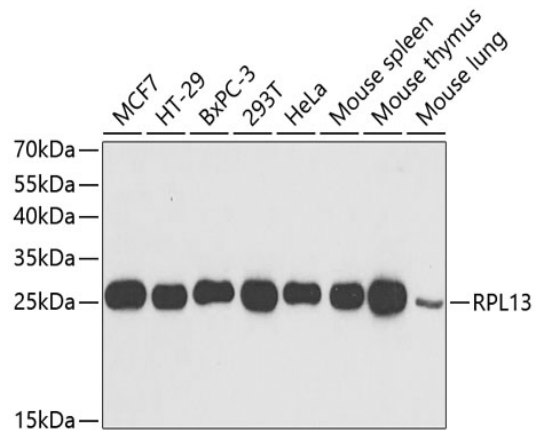
Applications

WB, IHC, IF

Dilutions

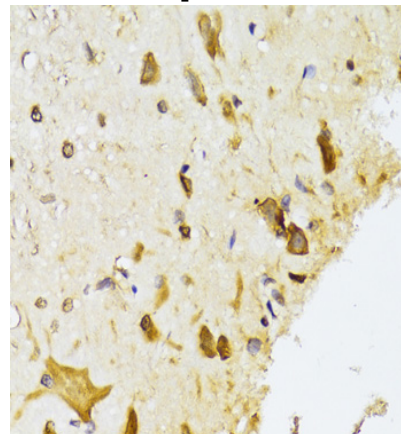
WB 1:500 - 1:2000
IHC 1:50 - 1:200
IF 1:50 - 1:200

Validations



Western blot - RPL13 Polyclonal Antibody

Western blot analysis of extracts of various cell lines, using RPL13 antibody at 1:1000 dilution. Secondary antibody: HRP Goat Anti-Rabbit IgG (H+L) at 1:10000 dilution. Lysates/proteins: 25ug per lane. Blocking buffer: 3% nonfat dry milk in TBST. Detection: ECL Basic Kit. Exposure time: 1s.



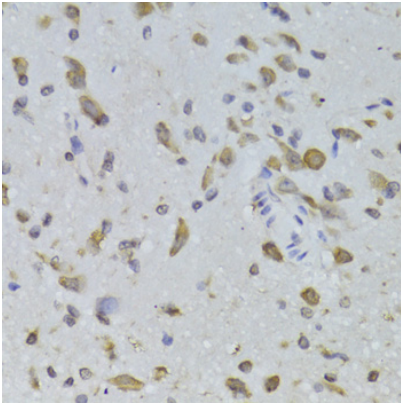
Western blot - RPL13 Polyclonal Antibody

Western blot analysis of extracts of various cells, using RPL13 antibody at 1:1000 dilution ratio through one-step method. Secondary antibody: HRP Goat Anti-Rabbit IgG (H+L) at 1:4000 dilution. Lysates/proteins: 25ug per lane. Blocking buffer: 3% nonfat dry milk in TBST. Detection: ECL Basic Kit. Exposure time: 90s.

RPL13 Polyclonal Antibody

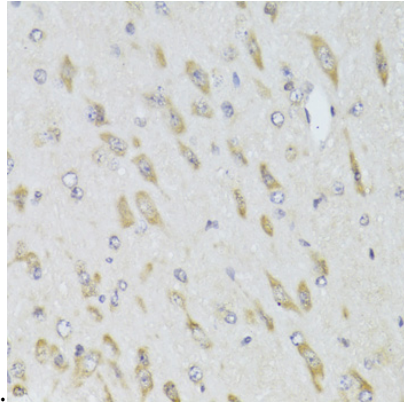


Catalog Number: 165001



Immunohistochemistry - RPL13 Polyclonal Antibody

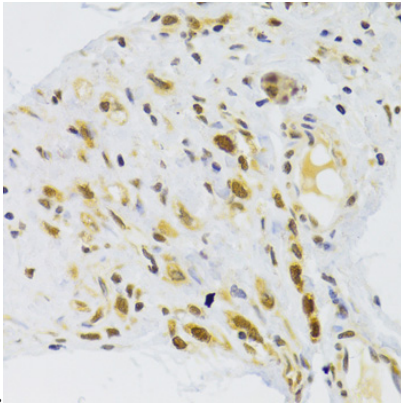
Immunohistochemistry of paraffin-embedded rat brain using RPL13 Antibody at dilution of 1:100



(40x lens).

Immunohistochemistry - RPL13 Polyclonal Antibody

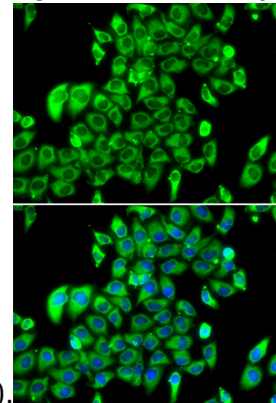
Immunohistochemistry of paraffin-embedded human breast using RPL13 Antibody at dilution of



1:100 (40x lens).

Immunohistochemistry - RPL13 Polyclonal Antibody

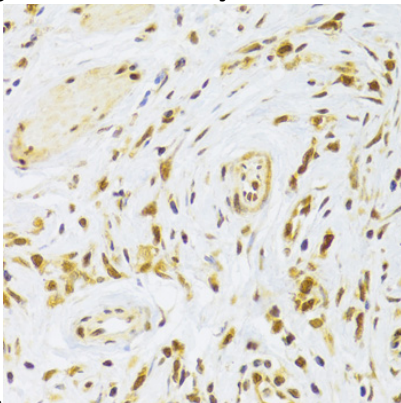
Immunohistochemistry of paraffin-embedded human stomach using RPL13 Antibody at dilution



of 1:100 (40x lens).

Immunohistochemistry - RPL13 Polyclonal Antibody

Immunohistochemistry of paraffin-embedded rat spinal cord using RPL13 Antibody at dilution of



1:100 (40x lens).

Immunohistochemistry - RPL13 Polyclonal Antibody

Immunohistochemistry of paraffin-embedded human gastric cancer using RPL13 Antibody at dilution of 1:100 (40x lens).