

C1R Polyclonal Antibody



Catalog Number: 164836

Product name

C1R Polyclonal Antibody

Specificity

Human, Mouse, Rat

Antibody description

Polyclonal antibody to C1R

Preparation

Antigen: Recombinant fusion protein containing a sequence corresponding to amino acids 466-705 of human C1R (NP_001724.3).

Formulation

PBS with 0.02% sodium azide, 50% glycerol, pH7.3.

Storage

Store at -20°C. Avoid freeze / thaw cycles.

Clonality

Polyclonal

Ig Type

Rabbit IgG

Applications

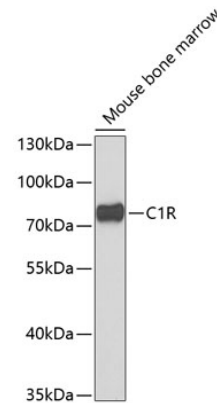
WB, IF

Dilutions

WB 1:500 - 1:2000

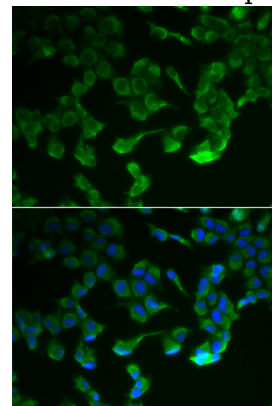
IF 1:50 - 1:200

Validations



Western blot - C1R Polyclonal Antibody

Western blot analysis of extracts of mouse bone marrow, using C1R antibody at 1:1000 dilution. Secondary antibody: HRP Goat Anti-Rabbit IgG (H+L) at 1:10000 dilution. Lysates/proteins: 25ug per lane. Blocking buffer: 3% nonfat dry milk in TBST. Detection: ECL Enhanced Kit. Exposure time: 90s.



Immunofluorescence - C1R Polyclonal Antibody

Immunofluorescence analysis of HeLa cells using C1R antibody. Blue: DAPI for nuclear staining.