

ASL Polyclonal Antibody



Catalog Number: 164831

Product name

ASL Polyclonal Antibody

Specificity

Human, Mouse, Rat

Antibody description

Polyclonal antibody to ASL

Preparation

Antigen: Recombinant fusion protein containing a sequence corresponding to amino acids 1-300 of human ASL (NP_000039.2).

Formulation

PBS with 0.02% sodium azide, 50% glycerol, pH7.3.

Storage

Store at -20°C. Avoid freeze / thaw cycles.

Clonality

Polyclonal

Ig Type

Rabbit IgG

Applications

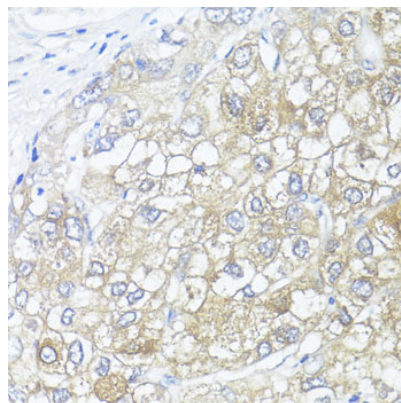
IHC, IF

Dilutions

IHC 1:50 - 1:200

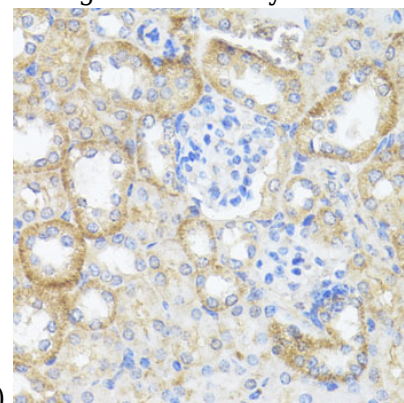
IF 1:50 - 1:100

Validations



Immunohistochemistry - ASL Polyclonal Antibody

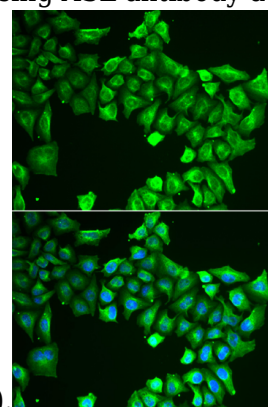
Immunohistochemistry of paraffin-embedded human liver cancer using ASL antibody at dilution



of 1:100 (40x lens).

Immunohistochemistry - ASL Polyclonal Antibody

Immunohistochemistry of paraffin-embedded mouse kidney using ASL antibody at dilution of



1:100 (40x lens).

Immunofluorescence - ASL Polyclonal Antibody

Immunofluorescence analysis of HeLa cells using ASL antibody . Blue: DAPI for nuclear staining.