

RCC1 Polyclonal Antibody



Catalog Number: 164827

Product name

RCC1 Polyclonal Antibody

Specificity

Human, Mouse, Rat

Antibody description

Polyclonal antibody to RCC1

Preparation

Antigen: Recombinant fusion protein containing a sequence corresponding to amino acids 1-240 of human RCC1 (NP_001260.1).

Formulation

PBS with 0.02% sodium azide, 50% glycerol, pH7.3.

Storage

Store at -20°C. Avoid freeze / thaw cycles.

Clonality

Polyclonal

Ig Type

Rabbit IgG

Applications

WB, IHC, IF

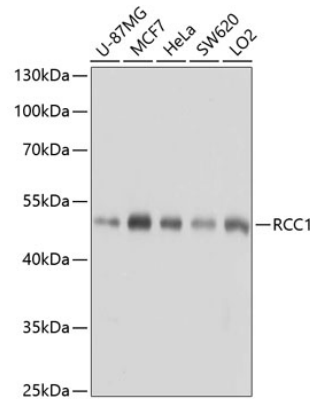
Dilutions

WB 1:1000 - 1:2000

IHC 1:50 - 1:200

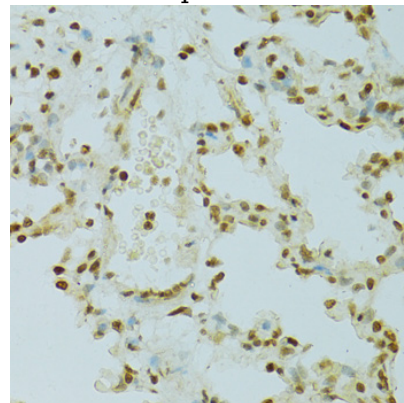
IF 1:50 - 1:200

Validations



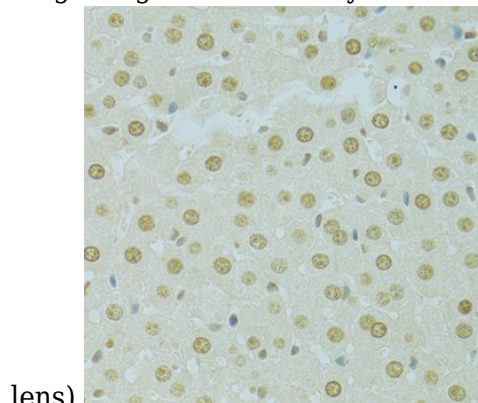
Western blot - RCC1 Polyclonal Antibody

Western blot analysis of extracts of various cell lines, using RCC1 antibody at 1:1000 dilution. Secondary antibody: HRP Goat Anti-Rabbit IgG (H+L) at 1:10000 dilution. Lysates/proteins: 25ug per lane. Blocking buffer: 3% nonfat dry milk in TBST. Detection: ECL Basic Kit. Exposure time: 5s.



Immunohistochemistry - RCC1 Polyclonal Antibody

Immunohistochemistry of paraffin-embedded rat lung using RCC1 antibody at dilution of 1:100 (40x



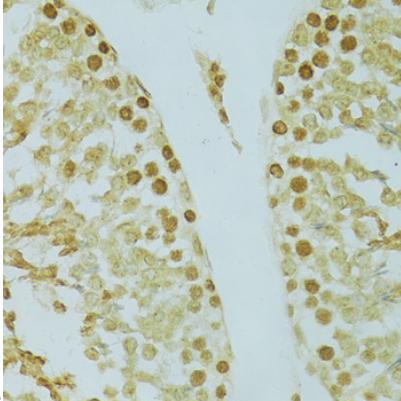
lens).

RCC1 Polyclonal Antibody

Catalog Number: 164827

Immunohistochemistry - RCC1 Polyclonal Antibody

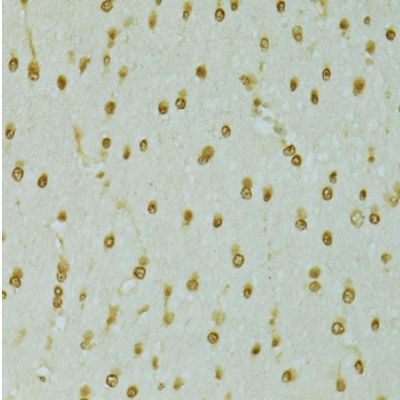
Immunohistochemistry of paraffin-embedded rat liver using RCC1 antibody at dilution of 1:100 (40x



lens).

Immunohistochemistry - RCC1 Polyclonal Antibody

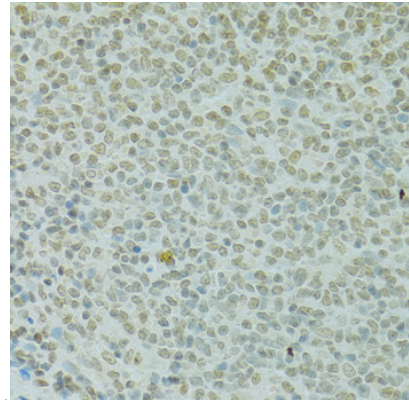
Immunohistochemistry of paraffin-embedded rat testis using RCC1 antibody at dilution of 1:100



(40x lens).

Immunohistochemistry - RCC1 Polyclonal Antibody

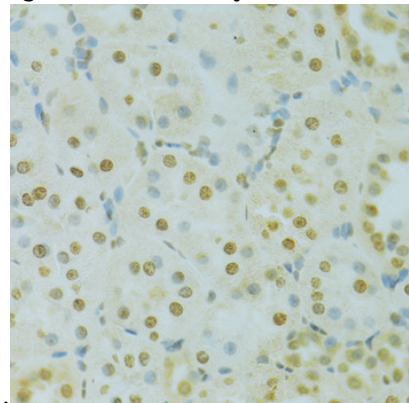
Immunohistochemistry of paraffin-embedded rat brain using RCC1 antibody at dilution of 1:100



(40x lens).

Immunohistochemistry - RCC1 Polyclonal Antibody

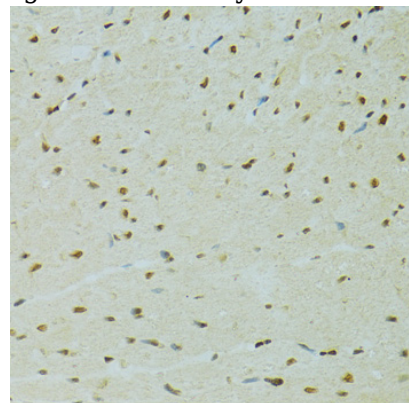
Immunohistochemistry of paraffin-embedded rat spleen using RCC1 antibody at dilution of 1:100



(40x lens).

Immunohistochemistry - RCC1 Polyclonal Antibody

Immunohistochemistry of paraffin-embedded rat kidney using RCC1 antibody at dilution of 1:100



(40x lens).

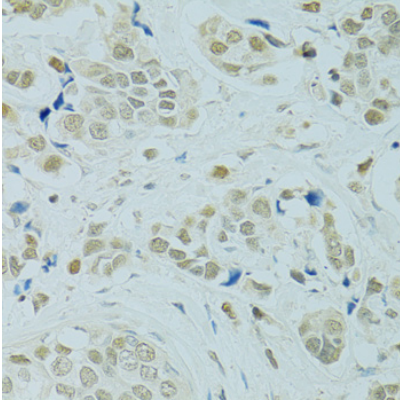
Immunohistochemistry - RCC1 Polyclonal Antibody

RCC1 Polyclonal Antibody



Catalog Number: 164827

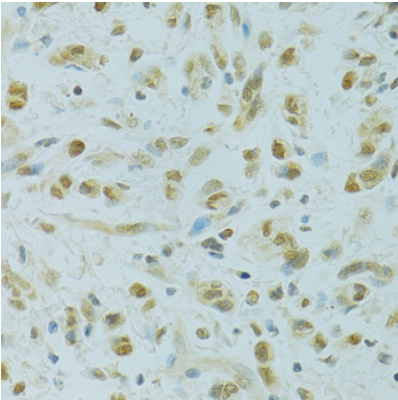
Immunohistochemistry of paraffin-embedded rat heart using RCC1 antibody at dilution of 1:100



(40x lens).

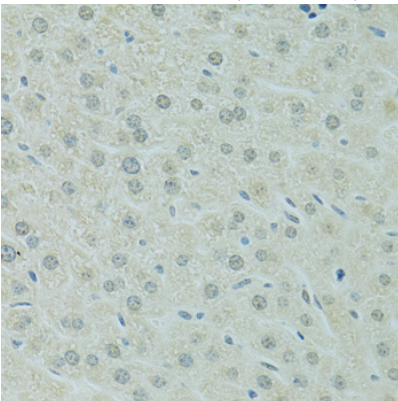
Immunohistochemistry - RCC1 Polyclonal Antibody

Immunohistochemistry of paraffin-embedded human breast cancer using RCC1 antibody at dilution of 1:100 (40x lens).



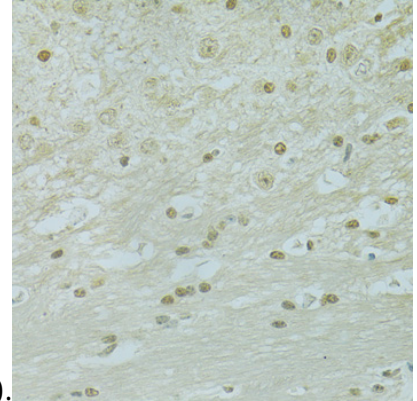
Immunohistochemistry - RCC1 Polyclonal Antibody

Immunohistochemistry of paraffin-embedded human gastric cancer using RCC1 antibody at dilution of 1:100 (40x lens).



Immunohistochemistry - RCC1 Polyclonal Antibody

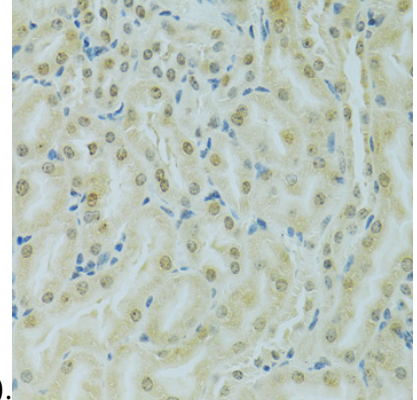
Immunohistochemistry of paraffin-embedded mouse liver using RCC1 antibody at dilution of



1:100 (40x lens).

Immunohistochemistry - RCC1 Polyclonal Antibody

Immunohistochemistry of paraffin-embedded mouse brain using RCC1 antibody at dilution of



1:100 (40x lens).

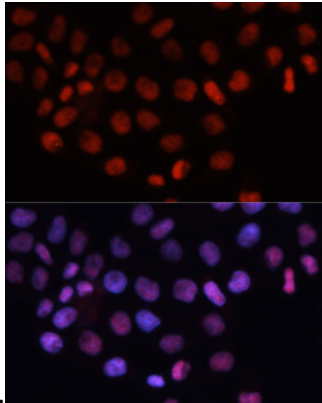
Immunohistochemistry - RCC1 Polyclonal Antibody

Immunohistochemistry of paraffin-embedded mouse kidney using RCC1 antibody at dilution of

RCC1 Polyclonal Antibody



Catalog Number: 164827



Immunofluorescence - RCC1 Polyclonal Antibody

Immunofluorescence analysis of HeLa cells using RCC1 antibody at dilution of 1:100. Blue: DAPI for nuclear staining.

1:100 (40x lens).