

# MSLN Polyclonal Antibody



Catalog Number: 164756

## Product name

MSLN Polyclonal Antibody

## Specificity

Human

## Antibody description

Polyclonal antibody to MSLN

## Preparation

Antigen: Recombinant fusion protein containing a sequence corresponding to amino acids 37-296 of human MSLN (NP\_001170826.1).

## Formulation

PBS with 0.02% sodium azide, 50% glycerol, pH7.3.

## Storage

Store at -20°C. Avoid freeze / thaw cycles.

## Clonality

Polyclonal

## Ig Type

Rabbit IgG

## Applications

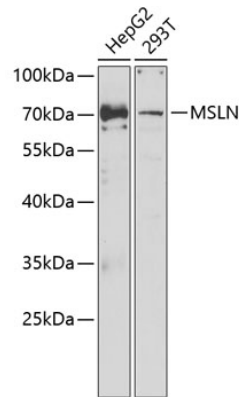
WB, IF

## Dilutions

WB 1:500 - 1:2000

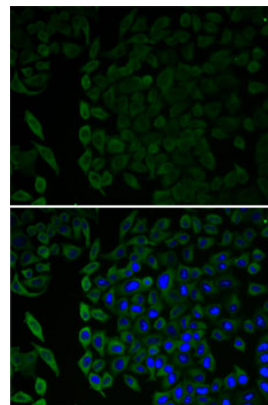
IF 1:10 - 1:100

## Validations



Western blot - MSLN Polyclonal Antibody

Western blot analysis of extracts of various cell lines, using MSLN antibody at 1:1000 dilution. Secondary antibody: HRP Goat Anti-Rabbit IgG (H+L) at 1:10000 dilution. Lysates/proteins: 25ug per lane. Blocking buffer: 3% nonfat dry milk in TBST.



Immunofluorescence - MSLN Polyclonal Antibody

Immunofluorescence analysis of U2OS cells using MSLN antibody. Blue: DAPI for nuclear staining.