

# PIWIL2 Polyclonal Antibody



Catalog Number: 164716

## Product name

PIWIL2 Polyclonal Antibody

## Specificity

Mouse, Rat

## Antibody description

Polyclonal antibody to PIWIL2

## Preparation

Antigen: Recombinant protein of mouse PIWIL2

## Formulation

PBS with 0.02% sodium azide, 50% glycerol, pH7.3.

## Storage

Store at -20°C. Avoid freeze / thaw cycles.

## Clonality

Polyclonal

## Ig Type

Rabbit IgG

## Applications

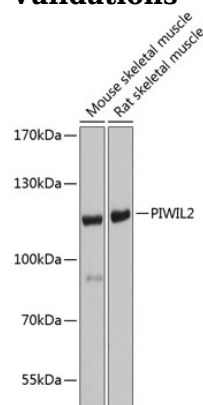
WB, IHC

## Dilutions

WB 1:1000 - 1:3000

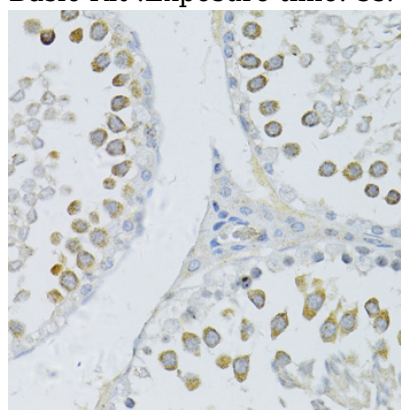
IHC 1:100 - 1:200

## Validations



### Western blot - PIWIL2 Polyclonal Antibody

Western blot analysis of extracts of various cell lines, using PIWIL2 antibody at 1:1000 dilution. Secondary antibody: HRP Goat Anti-Rabbit IgG (H+L) at 1:10000 dilution. Lysates/proteins: 25ug per lane. Blocking buffer: 3% nonfat dry milk in TBST. Detection: ECL Basic Kit. Exposure time: 5s.



### Immunohistochemistry - PIWIL2 Polyclonal Antibody

Immunohistochemistry of paraffin-embedded rat testis using PIWIL2 antibody at dilution of 1:100 (40x lens).