

# ACO1 Polyclonal Antibody

Catalog Number: 164710

## Product name

ACO1 Polyclonal Antibody

## Specificity

Mouse, Rat

## Antibody description

Polyclonal antibody to ACO1

## Preparation

Antigen: A synthetic peptide of human ACO1

## Formulation

PBS with 0.02% sodium azide, 50% glycerol, pH7.3.

## Storage

Store at -20°C. Avoid freeze / thaw cycles.

## Clonality

Polyclonal

## Ig Type

Rabbit IgG

## Applications

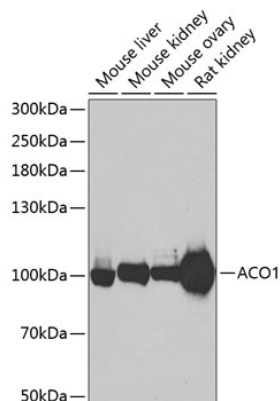
WB, IHC

## Dilutions

WB 1:500 - 1:1000

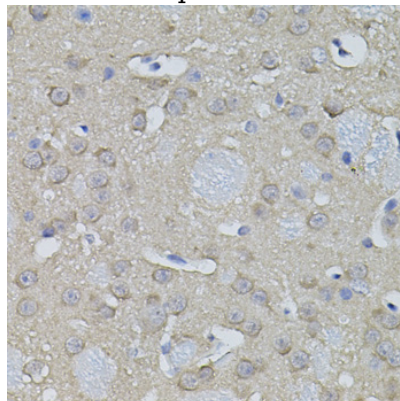
IHC 1:50 - 1:100

## Validations



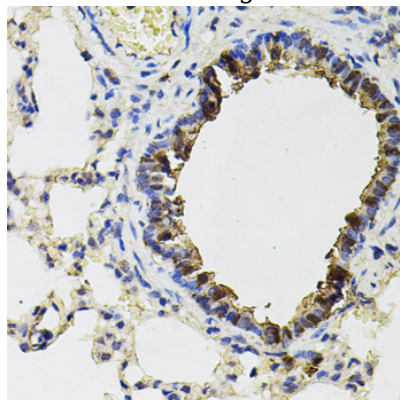
Western blot - ACO1 Polyclonal Antibody

Western blot analysis of extracts of various cell lines, using ACO1 antibody at 1:500 dilution. Secondary antibody: HRP Goat Anti-Rabbit IgG (H+L) at 1:10000 dilution. Lysates/proteins: 25ug per lane. Blocking buffer: 3% nonfat dry milk in TBST. Detection: ECL Basic Kit. Exposure time: 90s.



Immunohistochemistry - ACO1 Polyclonal Antibody

Immunohistochemistry of paraffin-embedded mouse brain using ACO1 antibody (40x lens).



# ACO1 Polyclonal Antibody

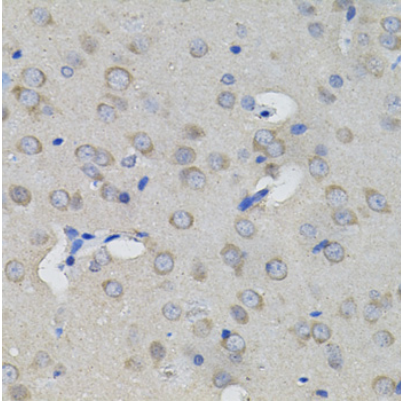


Catalog Number: 164710

---

## Immunohistochemistry - ACO1 Polyclonal Antibody

Immunohistochemistry of paraffin-embedded rat lung using ACO1 antibody (40x lens).



## Immunohistochemistry - ACO1 Polyclonal Antibody

Immunohistochemistry of paraffin-embedded rat brain using ACO1 antibody (40x lens).