

MOV10 Polyclonal Antibody



Catalog Number: 164247

Product name

MOV10 Polyclonal Antibody

Specificity

Human, Mouse, Rat

Antibody description

Polyclonal antibody to MOV10

Preparation

Antigen: Recombinant fusion protein containing a sequence corresponding to amino acids 1-310 of human MOV10 (NP_066014.1).

Formulation

PBS with 0.02% sodium azide, 50% glycerol, pH7.3.

Storage

Store at -20°C. Avoid freeze / thaw cycles.

Clonality

Polyclonal

Ig Type

Rabbit IgG

Applications

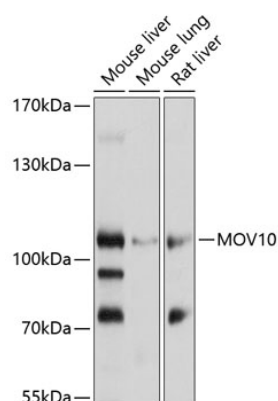
WB, IF

Dilutions

WB 1:1000 - 1:2000

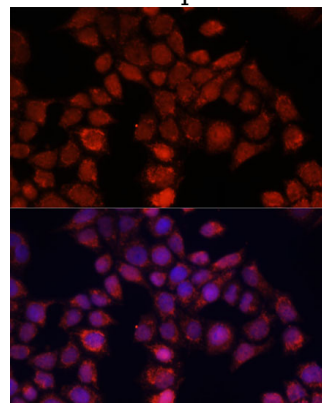
IF 1:50 - 1:200

Validations



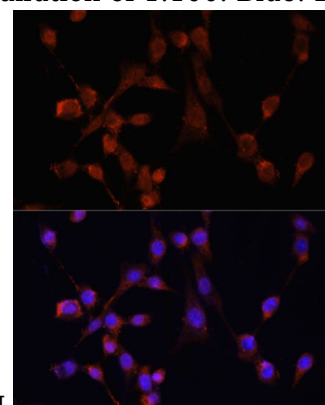
Western blot - MOV10 Polyclonal Antibody

Western blot analysis of extracts of various cell lines, using MOV10 antibody at 1:1000 dilution. Secondary antibody: HRP Goat Anti-Rabbit IgG (H+L) at 1:10000 dilution. Lysates/proteins: 25ug per lane. Blocking buffer: 3% nonfat dry milk in TBST. Detection: ECL Basic Kit. Exposure time: 30s.



Immunofluorescence - MOV10 Polyclonal Antibody

Immunofluorescence analysis of HeLa cells using mov10 antibody at dilution of 1:100. Blue: DAPI



for nuclear staining.

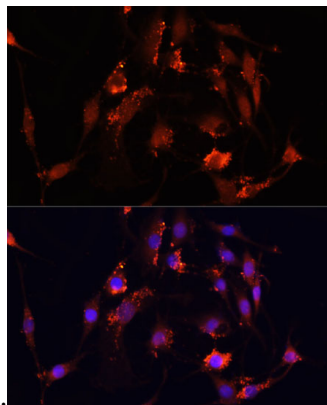
MOV10 Polyclonal Antibody



Catalog Number: 164247

Immunofluorescence - MOV10 Polyclonal Antibody

Immunofluorescence analysis of NIH/3T3 cells using mov10 antibody at dilution of 1:100. Blue:



DAPI for nuclear staining.

Immunofluorescence - MOV10 Polyclonal Antibody

Immunofluorescence analysis of PC12 cells using mov10 antibody at dilution of 1:100. Blue: DAPI for nuclear staining.