

# ARF6 Polyclonal Antibody



Catalog Number: 164050

## Product name

ARF6 Polyclonal Antibody

## Specificity

Human, Rat

## Antibody description

Polyclonal antibody to ARF6

## Preparation

Antigen: A synthetic peptide of human ARF6

## Formulation

PBS with 0.02% sodium azide, 50% glycerol, pH7.3.

## Storage

Store at -20°C. Avoid freeze / thaw cycles.

## Clonality

Polyclonal

## Ig Type

Rabbit IgG

## Applications

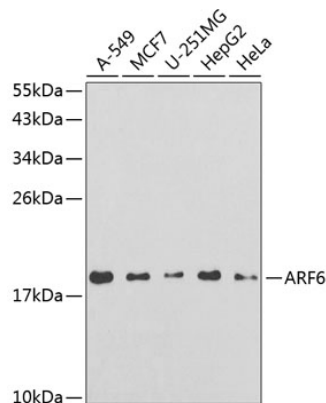
WB, IHC

## Dilutions

WB 1:100 - 1:500

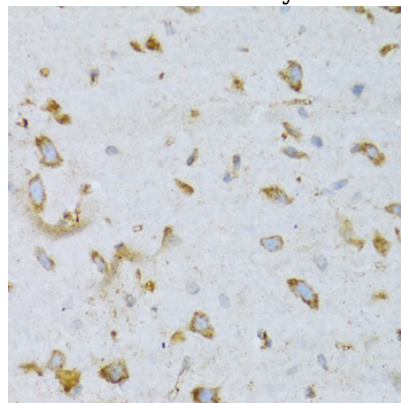
IHC 1:50 - 1:100

## Validations



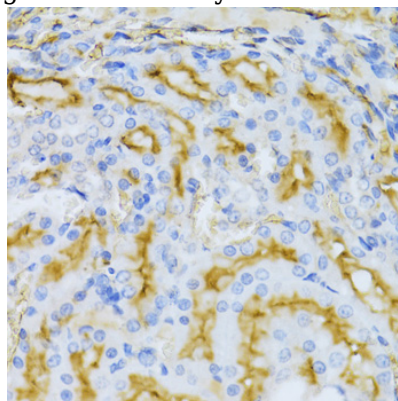
Western blot - ARF6 Polyclonal Antibody

Western blot analysis of extracts of various cell lines, using ARF6 antibody at 1:250 dilution. Secondary antibody: HRP Goat Anti-Rabbit IgG (H+L) at 1:10000 dilution. Lysates/proteins: 25ug per lane. Blocking buffer: 3% nonfat dry milk in TBST.



Immunohistochemistry - ARF6 Polyclonal Antibody

Immunohistochemistry of paraffin-embedded rat brain using ARF6 Antibody at dilution of 1:100



(40x lens).

Immunohistochemistry - ARF6 Polyclonal Antibody

# ARF6 Polyclonal Antibody



Catalog Number: 164050

---

Immunohistochemistry of paraffin-embedded rat

kidney using ARF6 Antibody at dilution of 1:100  
(40x lens).