

# GRIN2B Polyclonal Antibody



Catalog Number: 163999

## Product name

GRIN2B Polyclonal Antibody

## Specificity

Human, Mouse, Rat

## Antibody description

Polyclonal antibody to GRIN2B

## Preparation

Antigen: A synthetic peptide corresponding to a sequence within amino acids 1400 to the C-terminus of human GRIN2B (NP\_000825.2).

## Formulation

PBS with 0.02% sodium azide, 50% glycerol, pH7.3.

## Storage

Store at -20°C. Avoid freeze / thaw cycles.

## Clonality

Polyclonal

## Ig Type

Rabbit IgG

## Applications

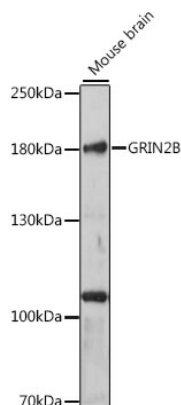
WB, IF

## Dilutions

WB 1:500 - 1:2000

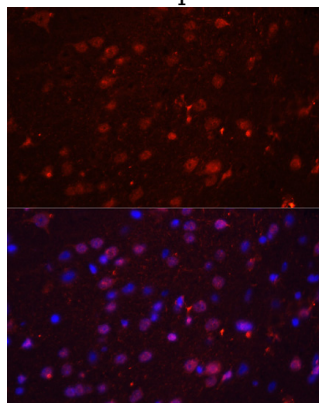
IF 1:50 - 1:200

## Validations



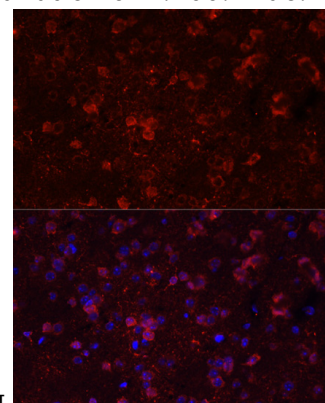
Western blot - GRIN2B Polyclonal Antibody

Western blot analysis of extracts of mouse brain, using GRIN2B antibody at 1:1000 dilution. Secondary antibody: HRP Goat Anti-Rabbit IgG (H+L) at 1:10000 dilution. Lysates/proteins: 25ug per lane. Blocking buffer: 3% nonfat dry milk in TBST. Detection: ECL Basic Kit. Exposure time: 90s.



Immunofluorescence - GRIN2B Polyclonal Antibody

Immunofluorescence analysis of rat brain using GRIN1 antibody at dilution of 1:100. Blue: DAPI



for nuclear staining.

# GRIN2B Polyclonal Antibody



Catalog Number: 163999

---

Immunofluorescence - GRIN2B Polyclonal Antibody

Immunofluorescence analysis of mouse brain using GRIN1 antibody at dilution of 1:100. Blue: DAPI for nuclear staining.