

# KRT15 Polyclonal Antibody



Catalog Number: 163849

## Product name

KRT15 Polyclonal Antibody

## Specificity

Human, Mouse

## Antibody description

Polyclonal antibody to KRT15

## Preparation

Antigen: Recombinant protein of human KRT15

## Formulation

PBS with 0.02% sodium azide, 50% glycerol, pH7.3.

## Storage

Store at -20°C. Avoid freeze / thaw cycles.

## Clonality

Polyclonal

## Ig Type

Rabbit IgG

## Applications

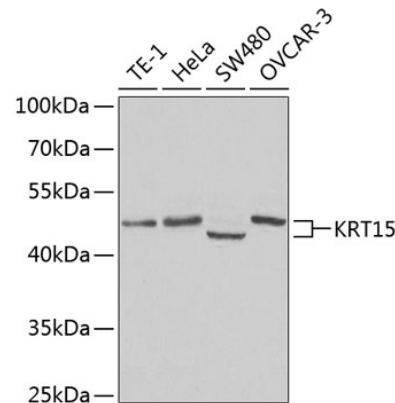
WB, IHC

## Dilutions

WB 1:500 - 1:2000

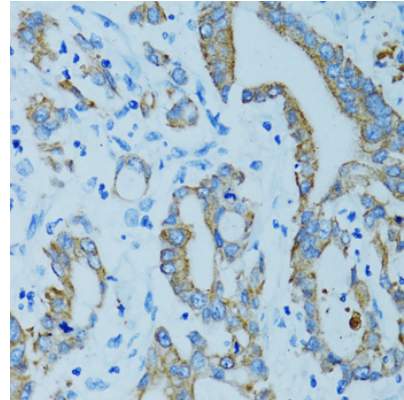
IHC 1:50 - 1:200

## Validations



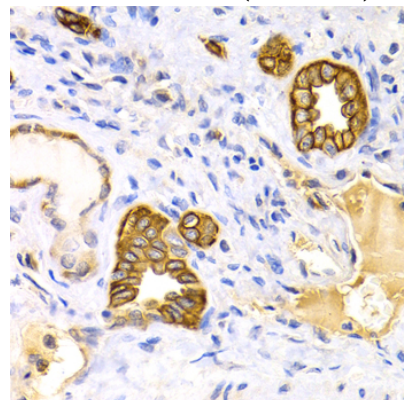
Western blot - KRT15 Polyclonal Antibody

Western blot analysis of extracts of various cell lines, using KRT15 antibody at 1:400 dilution. Secondary antibody: HRP Goat Anti-Rabbit IgG (H+L) at 1:10000 dilution. Lysates/proteins: 25ug per lane. Blocking buffer: 3% nonfat dry milk in TBST.



Immunohistochemistry - KRT15 Polyclonal Antibody

Immunohistochemistry of paraffin-embedded human colon carcinoma using KRT15 antibody at dilution of 1:100 (40x lens).



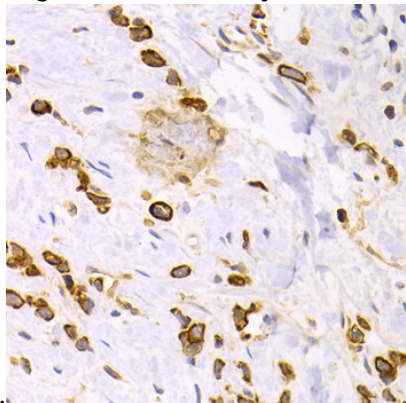
# KRT15 Polyclonal Antibody

Catalog Number: 163849

---

## Immunohistochemistry - KRT15 Polyclonal Antibody

Immunohistochemistry of paraffin-embedded human kidney using KRT15 antibody at dilution of



1:200 (40x lens).

## Immunohistochemistry - KRT15 Polyclonal Antibody

Immunohistochemistry of paraffin-embedded human gastric cancer using KRT15 antibody at dilution of 1:200 (40x lens).