

# EPB41 Polyclonal Antibody



Catalog Number: 163800

## Product name

EPB41 Polyclonal Antibody

## Specificity

Human, Mouse

## Antibody description

Polyclonal antibody to EPB41

## Preparation

Antigen: Recombinant fusion protein containing a sequence corresponding to amino acids 210-500 of human EPB41 (NP\_001159478.1).

## Formulation

PBS with 0.02% sodium azide, 50% glycerol, pH7.3.

## Storage

Store at -20°C. Avoid freeze / thaw cycles.

## Clonality

Polyclonal

## Ig Type

Rabbit IgG

## Applications

WB, IHC, IF

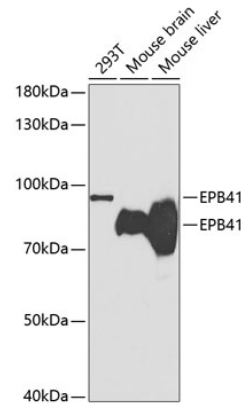
## Dilutions

WB 1:500 - 1:2000

IHC 1:50 - 1:200

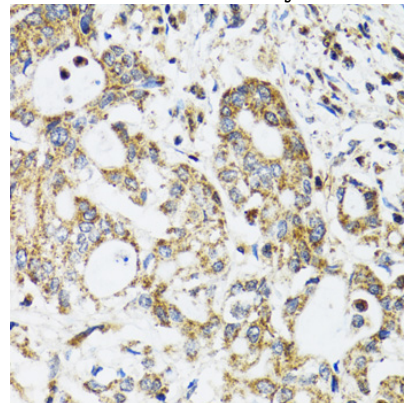
IF 1:50 - 1:200

## Validations



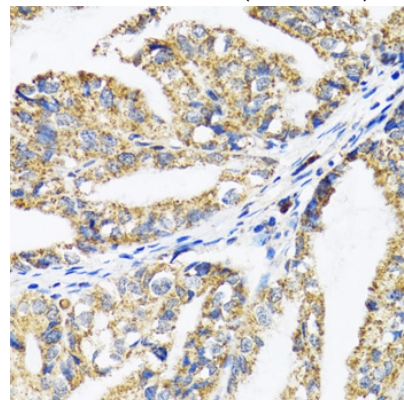
Western blot - EPB41 Polyclonal Antibody

Western blot analysis of extracts of various cell lines, using EPB41 antibody at 1:1000 dilution. Secondary antibody: HRP Goat Anti-Rabbit IgG (H+L) at 1:10000 dilution. Lysates/proteins: 25ug per lane. Blocking buffer: 3% nonfat dry milk in TBST.



Immunohistochemistry - EPB41 Polyclonal Antibody

Immunohistochemistry of paraffin-embedded human colon carcinoma using EPB41 antibody at dilution of 1:100 (40x lens).



# EPB41 Polyclonal Antibody

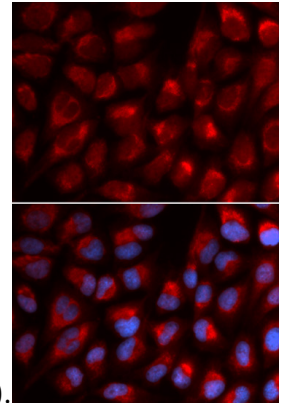


Catalog Number: 163800

---

Immunohistochemistry - EPB41 Polyclonal Antibody

Immunohistochemistry of paraffin-embedded human gastric cancer using EPB41 antibody at



dilution of 1:100 (40x lens).

Immunofluorescence - EPB41 Polyclonal Antibody

Immunofluorescence analysis of U2OS cells using EPB41 antibody . Blue: DAPI for nuclear staining.