

# SYK Polyclonal Antibody

Catalog Number: 163699

## Product name

SYK Polyclonal Antibody

## Specificity

Human, Mouse, Rat

## Antibody description

Polyclonal antibody to SYK

## Preparation

Antigen: Recombinant protein of human SYK

## Formulation

PBS with 0.02% sodium azide, 50% glycerol, pH7.3.

## Storage

Store at -20°C. Avoid freeze / thaw cycles.

## Clonality

Polyclonal

## Ig Type

Rabbit IgG

## Applications

WB, IHC, IF

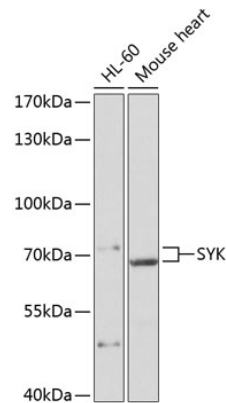
## Dilutions

WB 1:500 - 1:2000

IHC 1:50 - 1:100

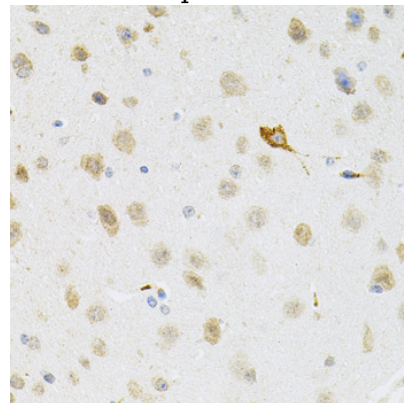
IF 1:50 - 1:200

## Validations



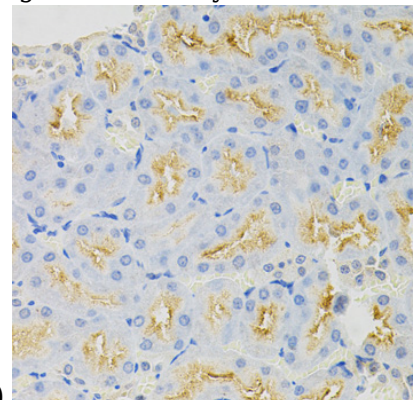
## Western blot - SYK Polyclonal Antibody

Western blot analysis of extracts of various cell lines, using SYK antibody at 1:500 dilution. Secondary antibody: HRP Goat Anti-Rabbit IgG (H+L) at 1:10000 dilution. Lysates/proteins: 25ug per lane. Blocking buffer: 3% nonfat dry milk in TBST. Detection: ECL Basic Kit. Exposure time: 90s.



## Immunohistochemistry - SYK Polyclonal Antibody

Immunohistochemistry of paraffin-embedded mouse brain using SYK Antibody at dilution of



1:100 (40x lens).

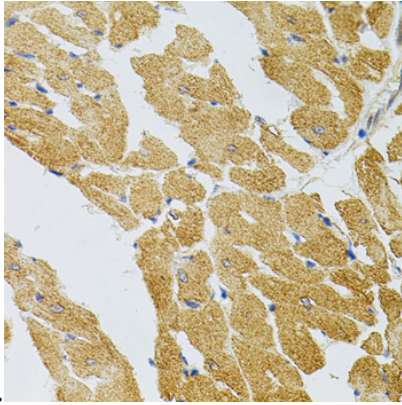
# SYK Polyclonal Antibody

Catalog Number: 163699

---

## Immunohistochemistry - SYK Polyclonal Antibody

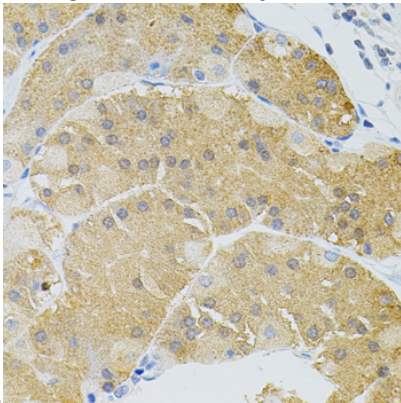
Immunohistochemistry of paraffin-embedded rat kidney using SYK Antibody at dilution of 1:100



(40x lens).

## Immunohistochemistry - SYK Polyclonal Antibody

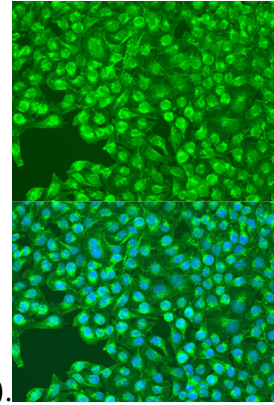
Immunohistochemistry of paraffin-embedded rat heart using SYK Antibody at dilution of 1:100 (40x



lens).

## Immunohistochemistry - SYK Polyclonal Antibody

Immunohistochemistry of paraffin-embedded human stomach using SYK Antibody at dilution of



1:100 (40x lens).

## Immunofluorescence - SYK Polyclonal Antibody

Immunofluorescence analysis of U2OS cells using SYK antibody at dilution of 1:100. Blue: DAPI for nuclear staining.