

SDC2 Polyclonal Antibody



Catalog Number: 163578

Product name

SDC2 Polyclonal Antibody

Specificity

Human, Mouse, Rat

Antibody description

Polyclonal antibody to SDC2

Preparation

Antigen: Recombinant fusion protein containing a sequence corresponding to amino acids 19-144 of human SDC2 (NP_002989.2).

Formulation

PBS with 0.02% sodium azide, 50% glycerol, pH7.3.

Storage

Store at -20°C. Avoid freeze / thaw cycles.

Clonality

Polyclonal

Ig Type

Rabbit IgG

Applications

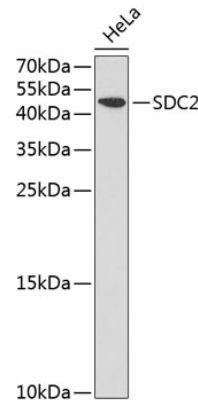
WB, IHC

Dilutions

WB 1:500 - 1:2000

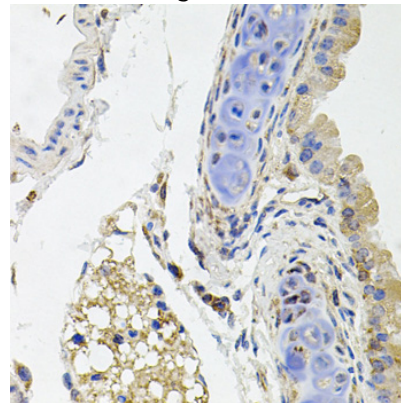
IHC 1:50 - 1:100

Validations



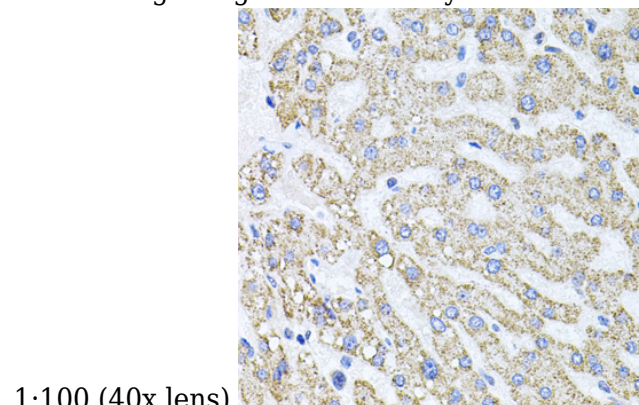
Western blot - SDC2 Polyclonal Antibody

Western blot analysis of extracts of HeLa cells, using SDC2 antibody at 1:1000 dilution. Secondary antibody: HRP Goat Anti-Rabbit IgG (H+L) at 1:10000 dilution. Lysates/proteins: 25ug per lane. Blocking buffer: 3% nonfat dry milk in TBST.



Immunohistochemistry - SDC2 Polyclonal Antibody

Immunohistochemistry of paraffin-embedded mouse lung using SDC2 antibody at dilution of



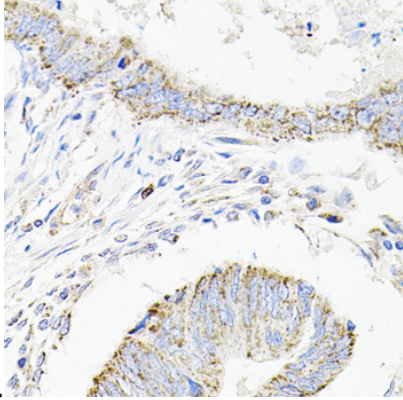
1:100 (40x lens).

Immunohistochemistry - SDC2 Polyclonal Antibody

SDC2 Polyclonal Antibody

Catalog Number: 163578

Immunohistochemistry of paraffin-embedded human liver injury using SDC2 antibody at dilution

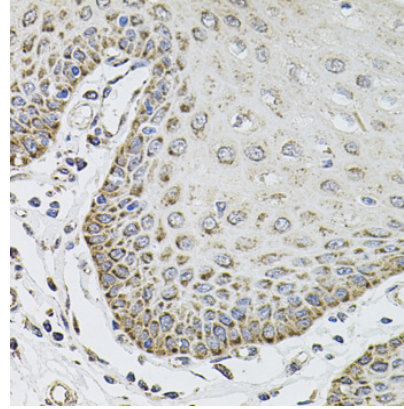


of 1:100 (40x lens).

Immunohistochemistry - SDC2 Polyclonal Antibody

Immunohistochemistry of paraffin-embedded human colon carcinoma using SDC2 antibody at

dilution of 1:100 (40x lens).



Immunohistochemistry - SDC2 Polyclonal Antibody

Immunohistochemistry of paraffin-embedded human esophagus using SDC2 antibody at dilution of 1:100 (40x lens).