

Histone H4 Polyclonal Antibody



Catalog Number: 163401

Product name

Histone H4 Polyclonal Antibody

Specificity

Human, Mouse, Rat

Antibody description

Polyclonal antibody to Histone H4

Preparation

Antigen: A synthetic peptide of human Histone H4.

Formulation

PBS with 0.02% sodium azide, 50% glycerol, pH7.3.

Storage

Store at -20°C. Avoid freeze / thaw cycles.

Clonality

Polyclonal

Ig Type

Rabbit IgG

Applications

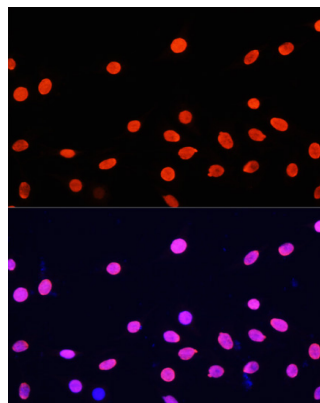
IHC, IF

Dilutions

IHC 1:50 - 1:200

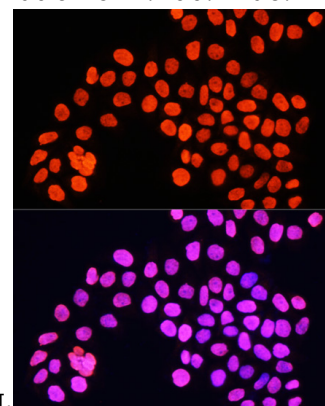
IF 1:50 - 1:200

Validations



Immunofluorescence - Histone H4 Polyclonal Antibody

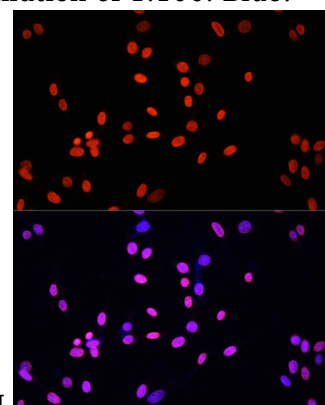
Immunofluorescence analysis of C6 cells using Histone H4 antibody at dilution of 1:100. Blue:



DAPI for nuclear staining.

Immunofluorescence - Histone H4 Polyclonal Antibody

Immunofluorescence analysis of HeLa cells using Histone H4 antibody at dilution of 1:100. Blue:



DAPI for nuclear staining.

Immunofluorescence - Histone H4 Polyclonal Antibody

Histone H4 Polyclonal Antibody



Catalog Number: 163401

Immunofluorescence analysis of NIH/3T3 cells

using Histone H4 antibody at dilution of 1:100.
Blue: DAPI for nuclear staining.