

# Apoe Polyclonal Antibody

Catalog Number: 163155

## Product name

Apoe Polyclonal Antibody

## Specificity

Human, Mouse

## Antibody description

Polyclonal antibody to Apoe

## Preparation

Antigen: A synthetic peptide of mouse Apoe

## Formulation

PBS with 0.02% sodium azide, 50% glycerol, pH7.3.

## Storage

Store at -20°C. Avoid freeze / thaw cycles.

## Clonality

Polyclonal

## Ig Type

Rabbit IgG

## Applications

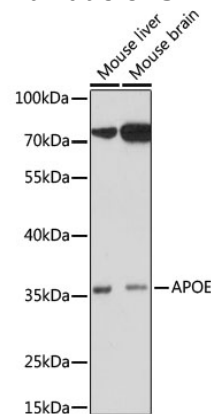
WB, IF

## Dilutions

WB 1:500 - 1:2000

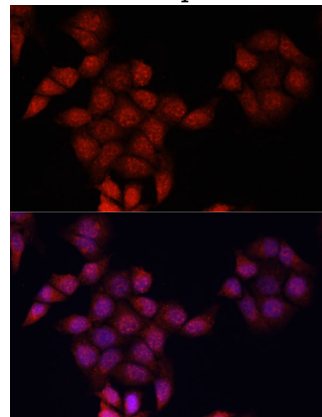
IF 1:50 - 1:200

## Validations



### Western blot - Apoe Polyclonal Antibody

Western blot analysis of extracts of various cell lines, using Apoe antibody at 1:1000 dilution. Secondary antibody: HRP Goat Anti-Rabbit IgG (H+L) at 1:10000 dilution. Lysates/proteins: 25ug per lane. Blocking buffer: 3% nonfat dry milk in TBST. Detection: ECL Basic Kit. Exposure time: 90s.



### Immunofluorescence - Apoe Polyclonal Antibody

Immunofluorescence analysis of HeLa cells using Apoe antibody at dilution of 1:100. Blue: DAPI for nuclear staining.