

# ATP1A3 Polyclonal Antibody



Catalog Number: 162985

## Product name

Rabbit IgG

ATP1A3 Polyclonal Antibody

## Applications

## Specificity

WB

Mouse, Rat

## Dilutions

## Antibody description

WB 1:500 - 1:2000

Polyclonal antibody to ATP1A3

## Preparation

Antigen: Recombinant fusion protein containing a sequence corresponding to amino acids 1-60 of human ATP1A3 (NP\_689509.1).

## Formulation

PBS with 0.02% sodium azide, 50% glycerol, pH7.3.

## Storage

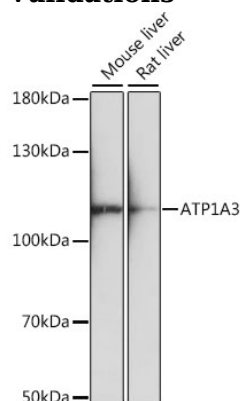
Store at -20°C. Avoid freeze / thaw cycles.

## Clonality

Polyclonal

## Ig Type

## Validations



## Western blot - ATP1A3 Polyclonal Antibody

Western blot analysis of extracts of various cell lines, using ATP1A3 antibody at 1:1000 dilution. Secondary antibody: HRP Goat Anti-Rabbit IgG (H+L) at 1:10000 dilution. Lysates/proteins: 25ug per lane. Blocking buffer: 3% nonfat dry milk in TBST. Detection: ECL Basic Kit. Exposure time: 90s.