

# CENPA Polyclonal Antibody



Catalog Number: 162961

## Product name

CENPA Polyclonal Antibody

## Specificity

Human

## Antibody description

Polyclonal antibody to CENPA

## Preparation

Antigen: A synthetic peptide corresponding to a sequence within amino acids 1-100 of human CENPA (NP\_001800.1).

## Formulation

PBS with 0.02% sodium azide, 50% glycerol, pH7.3.

## Storage

Store at -20°C. Avoid freeze / thaw cycles.

## Clonality

Polyclonal

## Ig Type

Rabbit IgG

## Applications

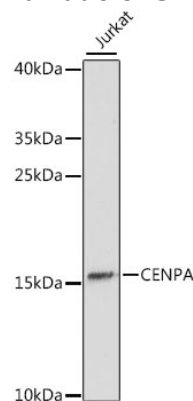
WB, IF

## Dilutions

WB 1:500 - 1:2000

IF 1:50 - 1:100

## Validations



Western blot - CENPA Polyclonal Antibody

Western blot analysis of extracts of Jurkat cells, using CENPA antibody at 1:1000 dilution. Secondary antibody: HRP Goat Anti-Rabbit IgG (H+L) at 1:10000 dilution. Lysates/proteins: 25ug per lane. Blocking buffer: 3% nonfat dry milk in TBST. Detection: ECL Enhanced Kit. Exposure time: 90s.