

# RERE Polyclonal Antibody



Catalog Number: 162534

## Product name

RERE Polyclonal Antibody

## Specificity

Human, Mouse, Rat

## Antibody description

Polyclonal antibody to RERE

## Preparation

Antigen: Recombinant fusion protein containing a sequence corresponding to amino acids 1-220 of human RERE (NP\_036234.3).

## Formulation

PBS with 0.02% sodium azide, 50% glycerol, pH7.3.

## Storage

Store at -20°C. Avoid freeze / thaw cycles.

## Clonality

Polyclonal

## Ig Type

Rabbit IgG

## Applications

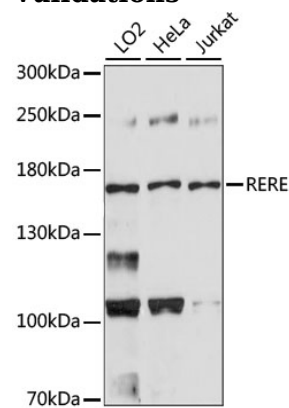
WB, IHC

## Dilutions

WB 1:200 - 1:2000

IHC 1:50 - 1:200

## Validations



Western blot - RERE Polyclonal Antibody

Western blot analysis of extracts of various cell lines, using RERE antibody .Secondary antibody: HRP Goat Anti-Rabbit IgG (H+L) at 1:10000 dilution.Lysates/proteins: 25ug per lane.Blocking buffer: 3% nonfat dry milk in TBST.Detection: ECL Basic Kit .Exposure time: 90s.