

IFI16 Polyclonal Antibody



Catalog Number: 161887

Product name

IFI16 Polyclonal Antibody

Specificity

Human, Mouse, Rat

Antibody description

Polyclonal antibody to IFI16

Preparation

Antigen: Recombinant fusion protein containing a sequence corresponding to amino acids 1-300 of human IFI16 (NP_005522.2).

Formulation

PBS with 0.02% sodium azide, 50% glycerol, pH7.3.

Storage

Store at -20°C. Avoid freeze / thaw cycles.

Clonality

Polyclonal

Ig Type

Rabbit IgG

Applications

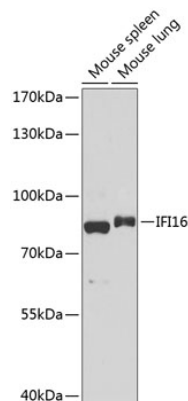
WB, IHC

Dilutions

WB 1:500 - 1:2000

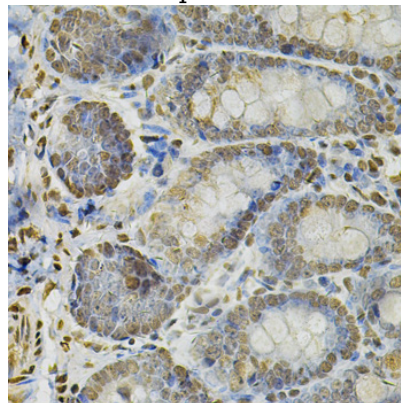
IHC 1:50 - 1:200

Validations



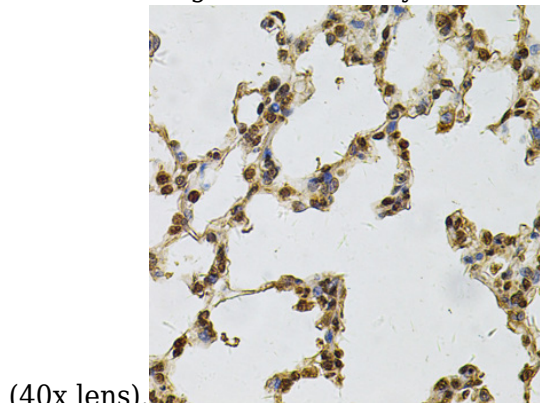
Western blot - IFI16 Polyclonal Antibody

Western blot analysis of extracts of various cell lines, using IFI16 antibody at 1:1000 dilution. Secondary antibody: HRP Goat Anti-Rabbit IgG (H+L) at 1:10000 dilution. Lysates/proteins: 25ug per lane. Blocking buffer: 3% nonfat dry milk in TBST. Detection: ECL Basic Kit. Exposure time: 90s.



Immunohistochemistry - IFI16 Polyclonal Antibody

Immunohistochemistry of paraffin-embedded rat intestine using IFI16 Antibody at dilution of 1:100



(40x lens).

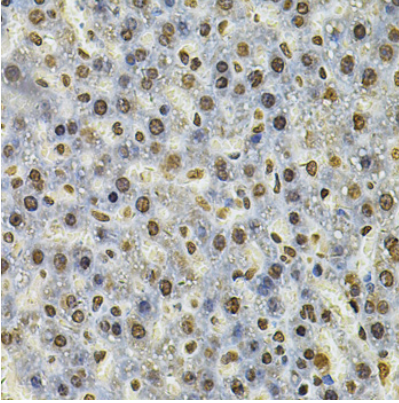
IFI16 Polyclonal Antibody



Catalog Number: 161887

Immunohistochemistry - IFI16 Polyclonal Antibody

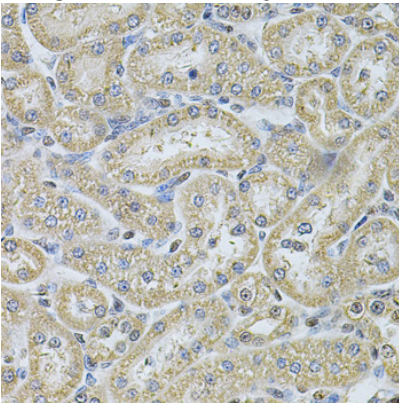
Immunohistochemistry of paraffin-embedded rat lung using IFI16 Antibody at dilution of 1:100 (40x lens).



lens).

Immunohistochemistry - IFI16 Polyclonal Antibody

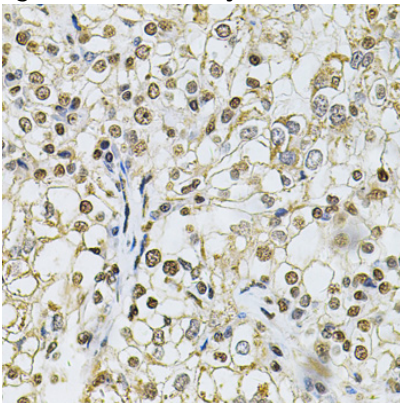
Immunohistochemistry of paraffin-embedded rat liver using IFI16 Antibody at dilution of 1:100 (40x lens).



lens).

Immunohistochemistry - IFI16 Polyclonal Antibody

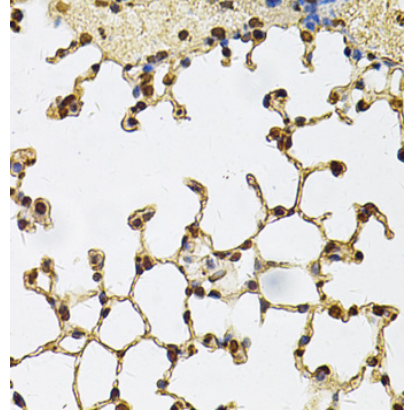
Immunohistochemistry of paraffin-embedded rat kidney using IFI16 Antibody at dilution of 1:100 (40x lens).



(40x lens).

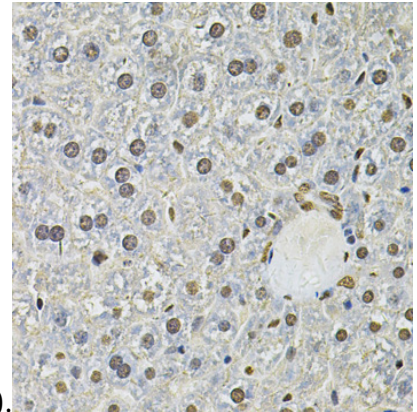
Immunohistochemistry - IFI16 Polyclonal Antibody

Immunohistochemistry of paraffin-embedded human kidney cancer using IFI16 Antibody at dilution of 1:100 (40x lens).



Immunohistochemistry - IFI16 Polyclonal Antibody

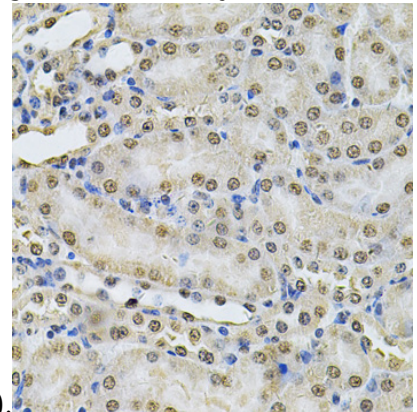
Immunohistochemistry of paraffin-embedded mouse lung using IFI16 Antibody at dilution of 1:100 (40x lens).



1:100 (40x lens).

Immunohistochemistry - IFI16 Polyclonal Antibody

Immunohistochemistry of paraffin-embedded mouse liver using IFI16 Antibody at dilution of 1:100 (40x lens).



1:100 (40x lens).

Immunohistochemistry - IFI16 Polyclonal Antibody

IFI16 Polyclonal Antibody



Catalog Number: 161887

Immunohistochemistry of paraffin-embedded

mouse kidney using IFI16 Antibody at dilution of 1:100 (40x lens).