

KLK10 Polyclonal Antibody



Catalog Number: 161721

Product name

KLK10 Polyclonal Antibody

Specificity

Human, Mouse, Rat

Antibody description

Polyclonal antibody to KLK10

Preparation

Antigen: Recombinant fusion protein containing a sequence corresponding to amino acids 35-276 of human KLK10 (NP_001070968.1).

Formulation

PBS with 0.02% sodium azide, 50% glycerol, pH7.3.

Storage

Store at -20°C. Avoid freeze / thaw cycles.

Clonality

Polyclonal

Ig Type

Rabbit IgG

Applications

WB, IHC, IF

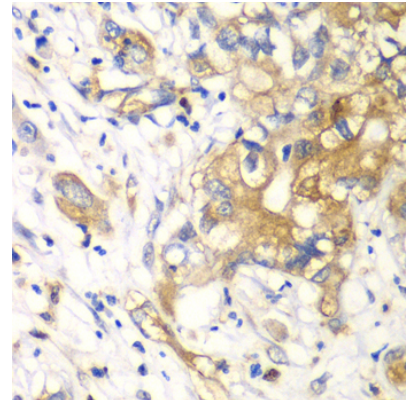
Dilutions

WB 1:500 - 1:2000

IHC 1:50 - 1:200

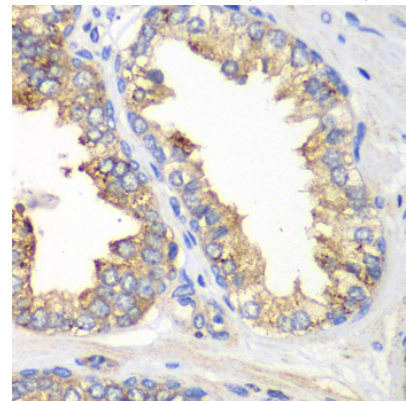
IF 1:50 - 1:200

Validations



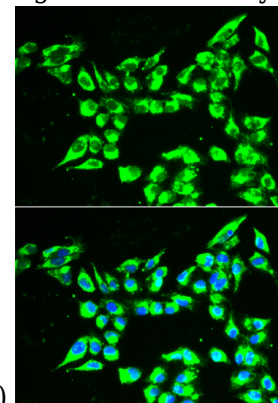
Immunohistochemistry - KLK10 Polyclonal Antibody

Immunohistochemistry of paraffin-embedded human liver cancer using KLK10 antibody at dilution of 1:100 (40x lens).



Immunohistochemistry - KLK10 Polyclonal Antibody

Immunohistochemistry of paraffin-embedded human prostate using KLK10 antibody at dilution



of 1:100 (40x lens).

Immunofluorescence - KLK10 Polyclonal Antibody

KLK10 Polyclonal Antibody



Catalog Number: 161721

Immunofluorescence analysis of A549 cells using KLK10 antibody . Blue: DAPI for nuclear staining.