

# NLRC4 Polyclonal Antibody



Catalog Number: 161457

## Product name

NLRC4 Polyclonal Antibody

## Specificity

Human, Mouse

## Antibody description

Polyclonal antibody to NLRC4

## Preparation

Antigen: Recombinant fusion protein containing a sequence corresponding to amino acids 89-159 of mouse NLRC4 (NP\_001028539.1).

## Formulation

PBS with 0.02% sodium azide, 50% glycerol, pH7.3.

## Storage

Store at -20°C. Avoid freeze / thaw cycles.

## Clonality

Polyclonal

## Ig Type

Rabbit IgG

## Applications

WB, IHC, IF

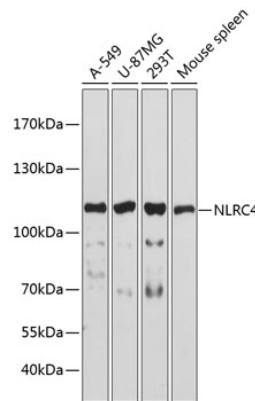
## Dilutions

WB 1:500 - 1:2000

IHC 1:50 - 1:200

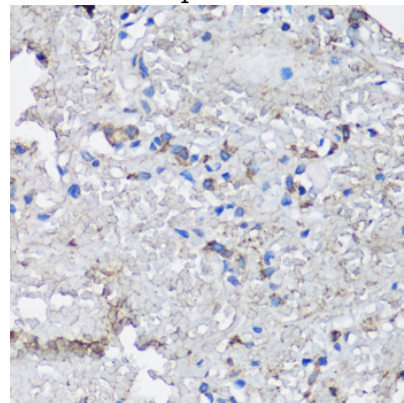
IF 1:50 - 1:200

## Validations



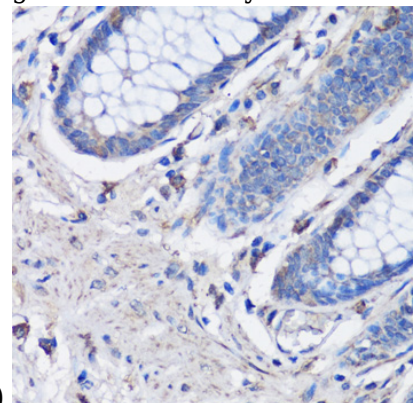
Western blot - NLRC4 Polyclonal Antibody

Western blot analysis of extracts of various cell lines, using NLRC4 antibody at 1:3000 dilution. Secondary antibody: HRP Goat Anti-Rabbit IgG (H+L) at 1:10000 dilution. Lysates/proteins: 25ug per lane. Blocking buffer: 3% nonfat dry milk in TBST. Detection: ECL Basic Kit. Exposure time: 60s.



Immunohistochemistry - NLRC4 Polyclonal Antibody

Immunohistochemistry of paraffin-embedded human lung using NLRC4 antibody at dilution of



1:100 (40x lens).

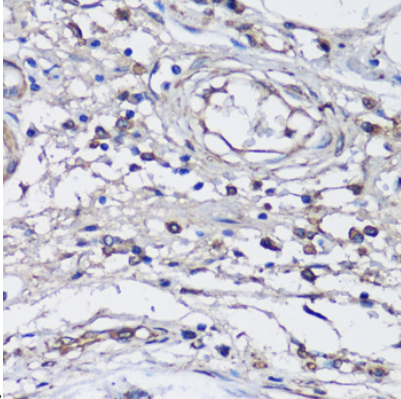
# NLRC4 Polyclonal Antibody

Catalog Number: 161457

---

## Immunohistochemistry - NLRC4 Polyclonal Antibody

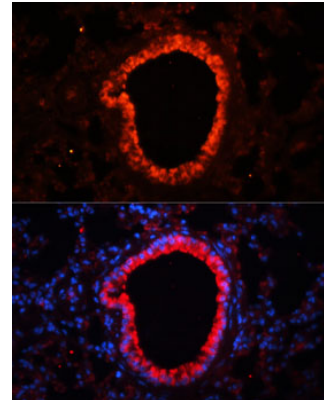
Immunohistochemistry of paraffin-embedded human colon using NLRC4 antibody at dilution of



1:100 (40x lens).

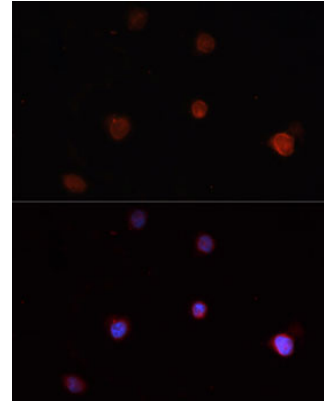
## Immunohistochemistry - NLRC4 Polyclonal Antibody

Immunohistochemistry of paraffin-embedded human gastric cancer using NLRC4 antibody at dilution of 1:100 (40x lens).



## Immunofluorescence - NLRC4 Polyclonal Antibody

Immunofluorescence analysis of mouse lung using NLRC4 antibody . Blue: DAPI for nuclear staining.



## Immunofluorescence - NLRC4 Polyclonal Antibody

Immunofluorescence analysis of THP-1 cells using NLRC4 antibody . Blue: DAPI for nuclear staining.