

# WDR35 Polyclonal Antibody



Catalog Number: 161285

## Product name

WDR35 Polyclonal Antibody

## Specificity

Human, Mouse, Rat

## Antibody description

Polyclonal antibody to WDR35

## Preparation

Antigen: Recombinant fusion protein containing a sequence corresponding to amino acids 871-1170 of human WDR35 (NP\_065830.2).

## Formulation

PBS with 0.02% sodium azide, 50% glycerol, pH7.3.

## Storage

Store at -20°C. Avoid freeze / thaw cycles.

## Clonality

Polyclonal

## Ig Type

Rabbit IgG

## Applications

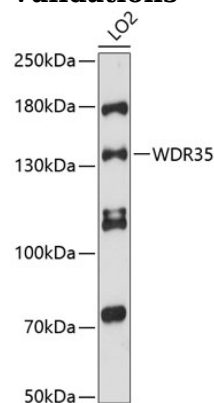
WB, IF

## Dilutions

WB 1:500 - 1:1000

IF 1:50 - 1:200

## Validations



Western blot - WDR35 Polyclonal Antibody

Western blot analysis of extracts of LO2 cells, using WDR35 antibody at 1:3000 dilution. Secondary antibody: HRP Goat Anti-Rabbit IgG (H+L) at 1:10000 dilution. Lysates/proteins: 25ug per lane. Blocking buffer: 3% nonfat dry milk in TBST. Detection: ECL Enhanced Kit. Exposure time: 90s.