

NAT2 Polyclonal Antibody

Catalog Number: 161249

Product name

NAT2 Polyclonal Antibody

Specificity

Human, Mouse, Rat

Antibody description

Polyclonal antibody to NAT2

Preparation

Antigen: Recombinant fusion protein containing a sequence corresponding to amino acids 171-290 of human NAT2 (NP_000006.2).

Formulation

PBS with 0.02% sodium azide, 50% glycerol, pH7.3.

Storage

Store at -20°C. Avoid freeze / thaw cycles.

Clonality

Polyclonal

Ig Type

Rabbit IgG

Applications

WB, IHC, IF

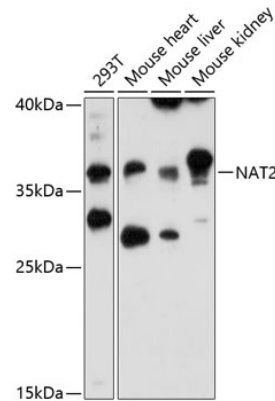
Dilutions

WB 1:500 - 1:2000

IHC 1:50 - 1:200

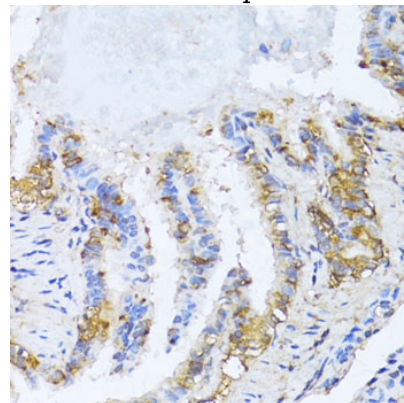
IF 1:50 - 1:200

Validations



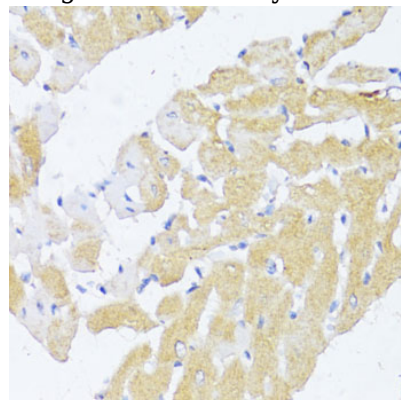
Western blot - NAT2 Polyclonal Antibody

Western blot analysis of extracts of various cell lines, using NAT2 antibody at 1:3000 dilution. Secondary antibody: HRP Goat Anti-Rabbit IgG (H+L) at 1:10000 dilution. Lysates/proteins: 25ug per lane. Blocking buffer: 3% nonfat dry milk in TBST. Detection: ECL Enhanced Kit. Exposure time: 30s.



Immunohistochemistry - NAT2 Polyclonal Antibody

Immunohistochemistry of paraffin-embedded rat lung using NAT2 antibody at dilution of 1:100 (40x



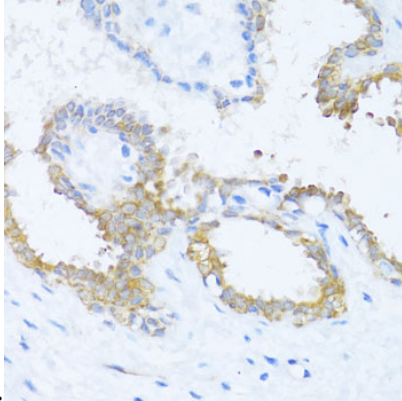
lens).

NAT2 Polyclonal Antibody

Catalog Number: 161249

Immunohistochemistry - NAT2 Polyclonal Antibody

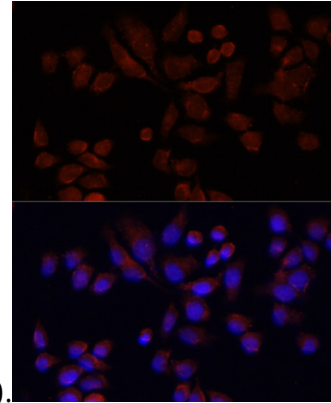
Immunohistochemistry of paraffin-embedded rat heart using NAT2 antibody at dilution of 1:100



(40x lens).

Immunohistochemistry - NAT2 Polyclonal Antibody

Immunohistochemistry of paraffin-embedded human breast using NAT2 antibody at dilution of



1:100 (40x lens).

Immunofluorescence - NAT2 Polyclonal Antibody

Immunofluorescence analysis of 293T cells using NAT2 antibody at dilution of 1:100 (40x lens).

Blue: DAPI for nuclear staining.