

# CRLS1 Polyclonal Antibody



Catalog Number: 161064

## Product name

Rabbit IgG

CRLS1 Polyclonal Antibody

## Applications

## Specificity

WB

Mouse

## Dilutions

## Antibody description

WB 1:200 - 1:500

Polyclonal antibody to CRLS1

## Preparation

Antigen: Recombinant fusion protein containing a sequence corresponding to amino acids 1-110 of human CRLS1 (NP\_061968.1).

## Formulation

PBS with 0.02% sodium azide, 50% glycerol, pH7.3.

## Storage

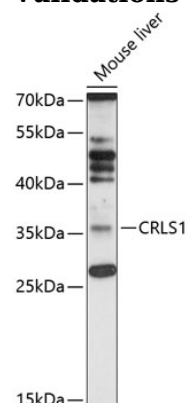
Store at -20°C. Avoid freeze / thaw cycles.

## Clonality

Polyclonal

## Ig Type

## Validations



## Western blot - CRLS1 Polyclonal Antibody

Western blot analysis of extracts of mouse liver, using CRLS1 antibody at 1:1000 dilution. Secondary antibody: HRP Goat Anti-Rabbit IgG (H+L) at 1:10000 dilution. Lysates/proteins: 25ug per lane. Blocking buffer: 3% nonfat dry milk in TBST. Detection: ECL Enhanced Kit. Exposure time: 60s.