

# MMP1 Polyclonal Antibody



Catalog Number: 160883

## Product name

MMP1 Polyclonal Antibody

## Specificity

Human, Mouse

## Antibody description

Polyclonal antibody to MMP1

## Preparation

Antigen: Recombinant fusion protein containing a sequence corresponding to amino acids 20-280 of human MMP1 (NP\_002412.1).

## Formulation

PBS with 0.02% sodium azide, 50% glycerol, pH7.3.

## Storage

Store at -20°C. Avoid freeze / thaw cycles.

## Clonality

Polyclonal

## Ig Type

Rabbit IgG

## Applications

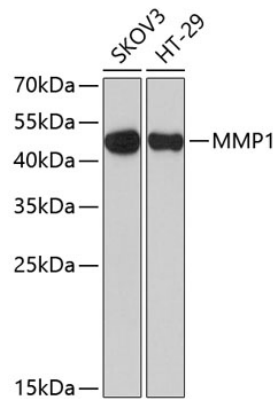
WB, IHC

## Dilutions

WB 1:500 - 1:2000

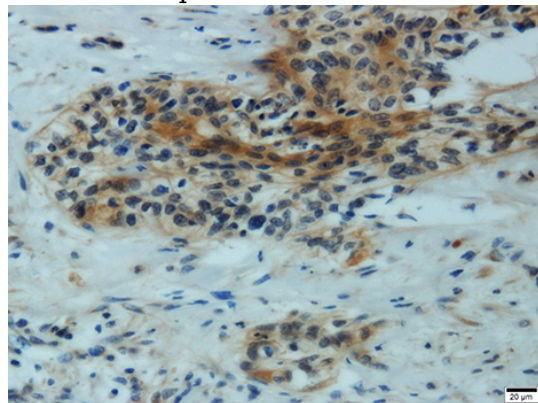
IHC 1:50 - 1:200

## Validations



## Western blot - MMP1 Polyclonal Antibody

Western blot analysis of extracts of various cell lines, using MMP1 antibody at 1:1000 dilution. Secondary antibody: HRP Goat Anti-Rabbit IgG (H+L) at 1:10000 dilution. Lysates/proteins: 25ug per lane. Blocking buffer: 3% nonfat dry milk in TBST. Detection: ECL Basic Kit. Exposure time: 90s.



## Immunohistochemistry - MMP1 Polyclonal Antibody

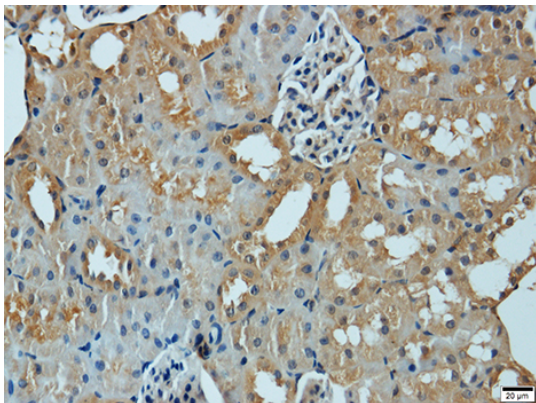
Immunohistochemistry of paraffin-embedded human cervical carcinoma using MMP1 antibody at dilution of 1:300 (40x lens).

# MMP1 Polyclonal Antibody



Catalog Number: 160883

---



Immunohistochemistry - MMP1 Polyclonal Antibody

Immunohistochemistry of paraffin-embedded mouse kidney using MMP1 antibody at dilution of 1:200 (40x lens).