

IDE Polyclonal Antibody



Catalog Number: 160847

Product name

IDE Polyclonal Antibody

Specificity

Human, Mouse

Antibody description

Polyclonal antibody to IDE

Preparation

Antigen: A synthetic peptide of human IDE

Formulation

PBS with 0.02% sodium azide, pH7.3.

Storage

Store at 4°C. Avoid freeze / thaw cycles.

Clonality

Polyclonal

Ig Type

Rabbit IgG

Applications

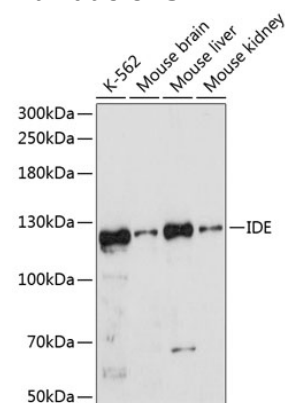
WB, IHC

Dilutions

WB 1:500 - 1:2000

IHC 1:50 - 1:100

Validations



Western blot - IDE Polyclonal Antibody

Western blot analysis of extracts of various cell lines, using IDE antibody at 1:1000 dilution. Secondary antibody: HRP Goat Anti-Rabbit IgG (H+L) at 1:10000 dilution. Lysates/proteins: 25ug per lane. Blocking buffer: 3% nonfat dry milk in TBST. Detection: ECL Basic Kit. Exposure time: 30s.