

# CDC25A Polyclonal Antibody



Catalog Number: 160822

## Product name

CDC25A Polyclonal Antibody

## Specificity

Human, Mouse, Rat

## Antibody description

Polyclonal antibody to CDC25A

## Preparation

Antigen: Recombinant fusion protein containing a sequence corresponding to amino acids 235-484 of human CDC25A (NP\_963861.1).

## Formulation

PBS with 0.02% sodium azide, 50% glycerol, pH7.3.

## Storage

Store at -20°C. Avoid freeze / thaw cycles.

## Clonality

Polyclonal

## Ig Type

Rabbit IgG

## Applications

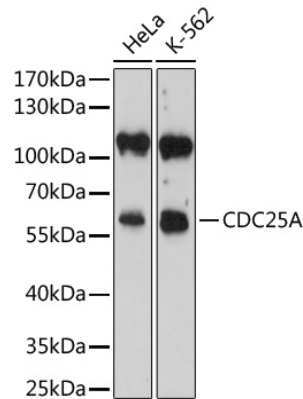
IHC, IF

## Dilutions

IHC 1:50 - 1:200

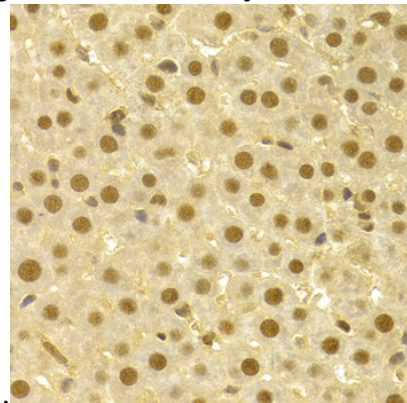
IF 1:50 - 1:200

## Validations



Immunohistochemistry - CDC25A Polyclonal Antibody

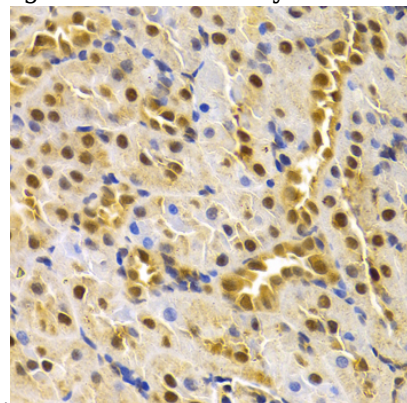
Immunohistochemistry of paraffin-embedded rat liver using CDC25A antibody at dilution of 1:100



(40x lens).

Immunohistochemistry - CDC25A Polyclonal Antibody

Immunohistochemistry of paraffin-embedded rat kidney using CDC25A antibody at dilution of 1:100



(40x lens).

Immunohistochemistry - CDC25A Polyclonal Antibody

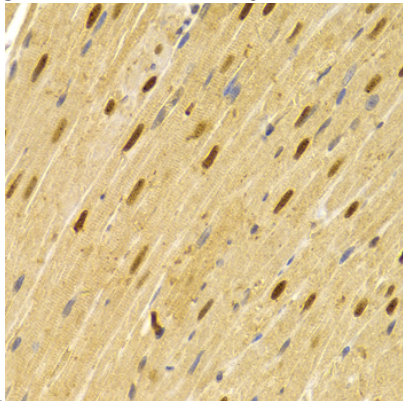
# CDC25A Polyclonal Antibody



Catalog Number: 160822

---

Immunohistochemistry of paraffin-embedded rat heart using CDC25A antibody at dilution of 1:100

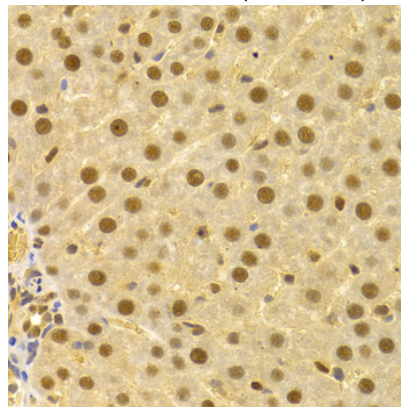


(40x lens).

Immunohistochemistry - CDC25A Polyclonal Antibody

Immunohistochemistry of paraffin-embedded human liver injury using CDC25A antibody at

dilution of 1:100 (40x lens).



Immunohistochemistry - CDC25A Polyclonal Antibody

Immunohistochemistry of paraffin-embedded mouse kidney using CDC25A antibody at dilution of 1:100 (40x lens).