

SLC12A2 Polyclonal Antibody



Catalog Number: 160799

Product name

SLC12A2 Polyclonal Antibody

Specificity

Human, Mouse, Rat

Antibody description

Polyclonal antibody to SLC12A2

Preparation

Antigen: Recombinant fusion protein containing a sequence corresponding to amino acids 120-280 of human SLC12A2 (NP_001037.1).

Formulation

PBS with 0.02% sodium azide, 50% glycerol, pH7.3.

Storage

Store at -20°C. Avoid freeze / thaw cycles.

Clonality

Polyclonal

Ig Type

Rabbit IgG

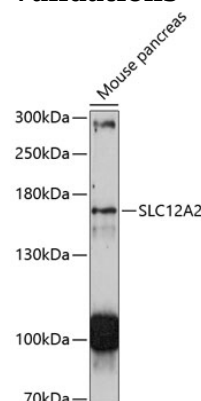
Applications

WB

Dilutions

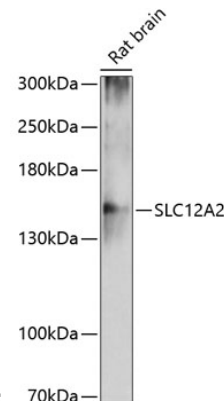
WB 1:500 - 1:2000

Validations



Western blot - SLC12A2 Polyclonal Antibody

Western blot analysis of extracts of mouse pancreas, using SLC12A2 antibody at 1:3000 dilution. Secondary antibody: HRP Goat Anti-Rabbit IgG (H+L) at 1:10000 dilution. Lysates/proteins: 25ug per lane. Blocking buffer: 3% nonfat dry milk in TBST. Detection: ECL



Enhanced Kit .Exposure time: 90s.

Western blot - SLC12A2 Polyclonal Antibody

Western blot analysis of extracts of rat brain, using SLC12A2 antibody at 1:3000 dilution. Secondary antibody: HRP Goat Anti-Rabbit IgG (H+L) at 1:10000 dilution. Lysates/proteins: 25ug per lane. Blocking buffer: 3% nonfat dry milk in TBST. Detection: ECL Enhanced Kit .Exposure time: 90s.