

APOE Polyclonal Antibody



Catalog Number: 160055

Product name

APOE Polyclonal Antibody

Specificity

Human, Mouse

Antibody description

Polyclonal antibody to APOE

Preparation

Antigen: A synthetic peptide corresponding to a sequence within amino acids 200-300 of human APOE (NP_000032.1).

Formulation

PBS with 0.02% sodium azide, 50% glycerol, pH7.3.

Storage

Store at -20°C. Avoid freeze / thaw cycles.

Clonality

Polyclonal

Ig Type

Rabbit IgG

Applications

WB, IHC, IF

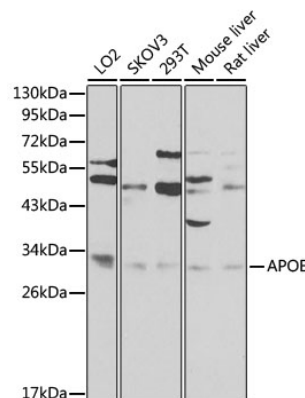
Dilutions

WB 1:500 - 1:2000

IHC 1:50 - 1:200

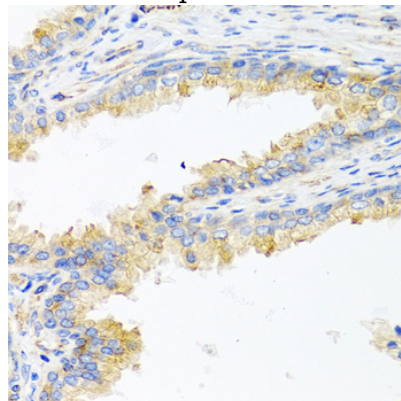
IF 1:50 - 1:200

Validations



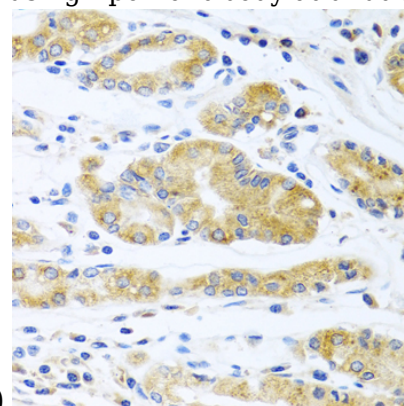
Western blot - APOE Polyclonal Antibody

Western blot analysis of extracts of various cell lines, using ApoE antibody at 1:1000 dilution. Secondary antibody: HRP Goat Anti-Rabbit IgG (H+L) at 1:10000 dilution. Lysates/proteins: 25ug per lane. Blocking buffer: 3% nonfat dry milk in TBST. Detection: ECL Basic Kit. Exposure time: 90s.



Immunohistochemistry - APOE Polyclonal Antibody

Immunohistochemistry of paraffin-embedded human prostate using ApoE antibody at dilution of



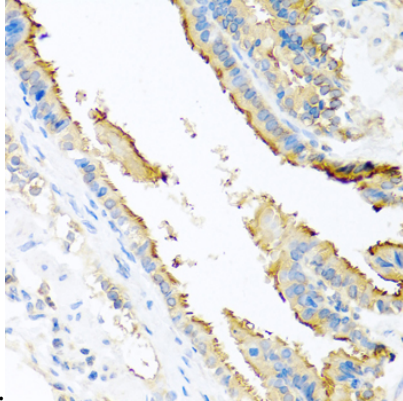
1:100 (40x lens).

APOE Polyclonal Antibody

Catalog Number: 160055

Immunohistochemistry - APOE Polyclonal Antibody

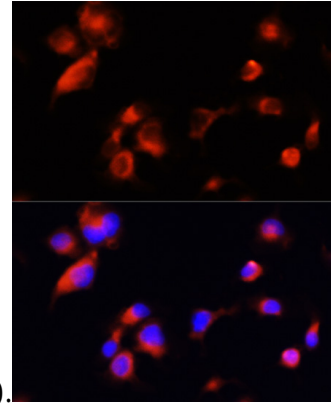
Immunohistochemistry of paraffin-embedded human stomach using ApoE antibody at dilution of



1:100 (40x lens).

Immunohistochemistry - APOE Polyclonal Antibody

Immunohistochemistry of paraffin-embedded mouse lung using ApoE antibody at dilution of



1:100 (40x lens).

Immunofluorescence - APOE Polyclonal Antibody

Immunofluorescence analysis of A431 cells using ApoE antibody at dilution of 1:100 (40x lens).
Blue: DAPI for nuclear staining.