

IRF7 Polyclonal Antibody



Catalog Number: 160027

Product name

IRF7 Polyclonal Antibody

Specificity

Human, Mouse

Antibody description

Polyclonal antibody to IRF7

Preparation

Antigen: Recombinant fusion protein containing a sequence corresponding to amino acids 257-516 of human IRF7 (NP_004022.2).

Formulation

PBS with 0.02% sodium azide, 50% glycerol, pH7.3.

Storage

Store at -20°C. Avoid freeze / thaw cycles.

Clonality

Polyclonal

Ig Type

Rabbit IgG

Applications

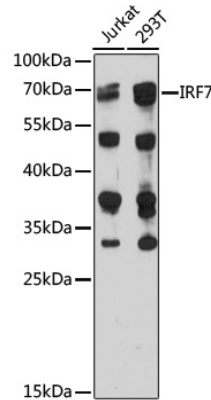
WB, IF

Dilutions

WB 1:500 - 1:2000

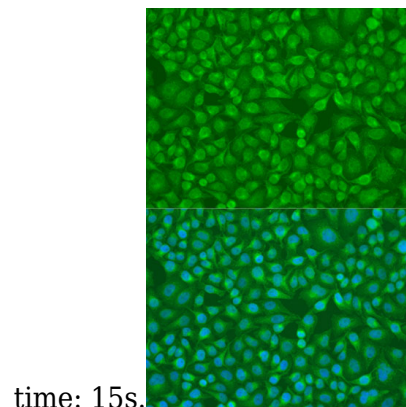
IF 1:50 - 1:200

Validations



Western blot - IRF7 Polyclonal Antibody

Western blot analysis of extracts of 293T cells, using IRF7 antibody at 1:1000 dilution. Secondary antibody: HRP Goat Anti-Rabbit IgG (H+L) at 1:10000 dilution. Lysates/proteins: 25ug per lane. Blocking buffer: 3% nonfat dry milk in TBST. Detection: ECL Enhanced Kit. Exposure



time: 15s.

Immunofluorescence - IRF7 Polyclonal Antibody

Immunofluorescence analysis of U2OS cells using IRF7 antibody at dilution of 1:100. Blue: DAPI for nuclear staining.