

Anti-TLE1 antibody



Catalog Number: 143037

Product name

Anti-TLE1 antibody

Specificity

Human TLE1

Antibody description

Rabbit Polyclonal to Human TLE1

Preparation

Produced in rabbits immunized with a synthetic peptide corresponding to the N-terminus of the Human TLE1, and purified by antigen affinity chromatography.

Formulation

0.2 µm filtered solution in PBS

Storage

This antibody can be stored at 2°C-8°C for one month without detectable loss of activity. Antibody products are stable for twelve months from date of receipt when stored at -20°C to -80°C.

Preservative-Free.

Sodium azide is recommended to avoid contamination (final concentration 0.05%-0.1%). It is toxic to cells and should be disposed of properly. Avoid repeated freeze-thaw cycles.

Clonality

Polyclonal

Ig Type

Rabbit IgG

Applications

WB, IHC-P, ICC/IF, IF

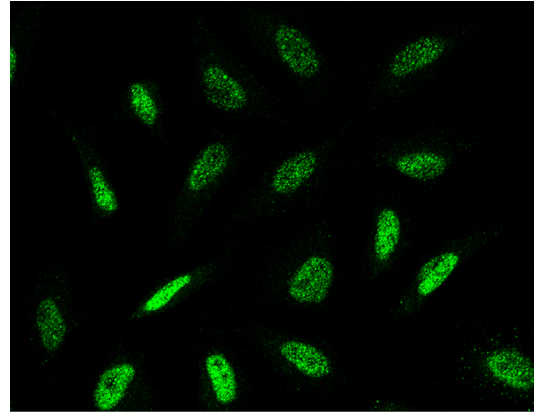
Dilutions

WB: 5-20 µg/ml

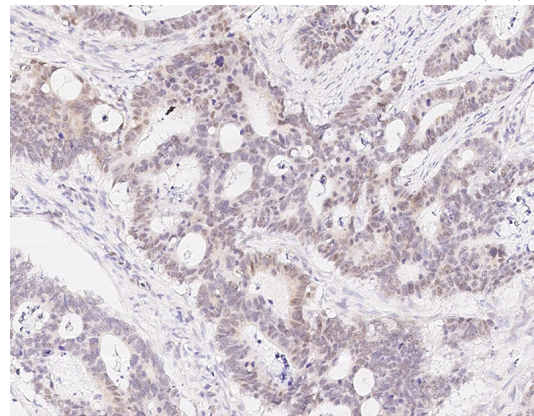
IHC-P: 0.1-2µg/mL

ICC/IF: 0.5-3µg/mL

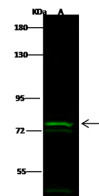
Validations



Human TLE1 Immunofluorescence(IF) 15831



Human TLE1 Immunohistochemistry(IHC) 15830

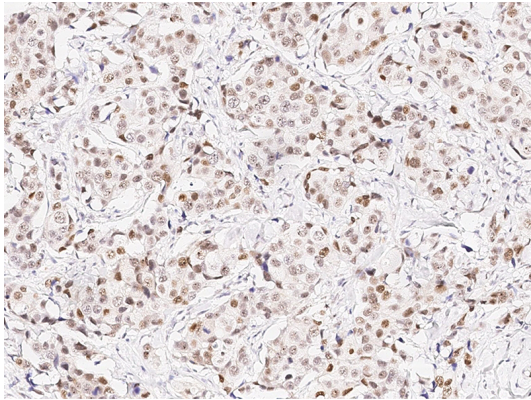


Items	Lanes	A
Sample (whole cell lysate)		HepG2
Sample Volume (µg/lane)		30
Gel		7.5% SDS-PAGE reducing gel
Recommended Concentration		5-20 µg/ml
Secondary Antibody		Dylight 800 labeled Antibody to Rabbit IgG (H+), at 1:5000 dilution.
Explanation		Developed using Odyssey imaging system. Predicted band size : 83 kDa Observed band size : 78 kDa Additional bands at : 48 kDa and 72 kDa (We are unsure as to the identity of these extra bands.)

Human TLE1 Western blot (WB) 15828

Anti-TLE1 antibody

Catalog Number: 143037



Human TLE1 Immunohistochemistry(IHC) 15829