

Anti-SLC2A10 antibody



Catalog Number: 143013

Product name

Anti-SLC2A10 antibody

Specificity

Human SLC2A10

Antibody description

Rabbit Polyclonal to Human SLC2A10

Preparation

Produced in rabbits immunized with a synthetic peptide corresponding to the C-terminus of the Human SLC2A10, and purified by antigen affinity chromatography.

Formulation

0.2 µm filtered solution in PBS

Storage

This antibody can be stored at 2°C-8°C for one month without detectable loss of activity. Antibody products are stable for twelve months from date of receipt when stored at -20°C to -80°C.

Preservative-Free.

Sodium azide is recommended to avoid contamination (final concentration 0.05%-0.1%). It is toxic to cells and should be disposed of

properly. Avoid repeated freeze-thaw cycles.

Clonality

Polyclonal

Ig Type

Rabbit IgG

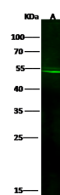
Applications

WB

Dilutions

WB: 5-20 µg/ml

Validations



Lanes	
Items	A
Sample (whole cell lysate)	HepG2
Sample Volume (µg/lane)	30
Gel	13% SDS-PAGE reducing gel
Recommended Concentration	10 µg/ml
Secondary Antibody	Dylight 800-labeled Antibody to Rabbit IgG (H+L), at 1:5000 dilution.
Explanation	Developed using Odyssey imaging system. Predicted band size : 54 kDa Observed band size : 54 kDa

SLC2A10 Antibody, Rabbit PAb, Antigen Affinity Purified, Western blot